

PROPOSAL

For

ASHRAM BHAVAN

आदिवासी कुल आश्रम कोट्टमण्डली भवन निर्माण-काम
विशेष आदिवासी विभाग, राँची



For

**DEPTT. OF TRIBAL DEVELOPMENT,
RAIPUR, C. G.**

Prepared by

BHARTI & ASSOCIATES

NEAR LIFEWORTH HOSPITAL,
SANTA COLONY, RAIPUR, C.G.

CELL - 983214343

MAIL - qualitywithbharti@vsnl.com

આશ્રમ ભવન બાંધકામ ઇસ્ટિમેટ અને નિર્માણ વાકા નિર્માણ
અસીમિત કિલો - રાજકોટ


SUMMERY OF ESTIMATE			
FOR 50 BED ASHRAM BHAVAN			
FOR TRIBAL DEVELOPMENT DEPARTMENT			
1	BUILDING WORKS	Rs.	12452000.00
2	SANITARY & WATER SUPPLY	Rs.	655000.00
3	ELECTRIFICATION	Rs.	911000.00
4	SEPTIC TANK	Rs.	61000.00
5	BORE WELL	Rs.	71000.00
6	SUBMERSIBLE PUMP	Rs.	83000.00
7	SUMP WELL	Rs.	84000.00
8	RAIN WATER HARVESTING	Rs.	48000.00
9	CHAUKIDAR QUARTER	Rs.	334000.00
10	BOUNDARY WALL	Rs.	1163000.00
11	DRAIN	Rs.	162000.00
12	ENTRANCE ROAD	Rs.	152000.00
14	SITE DEVELOPMENT (Flower beds, horticulture, etc.) L/S	Rs.	50000.00
	SUB-TOTAL	Rs.	16226000.00
	Add for Contingencies	Rs.	50000.00
	GRAND TOTAL	Rs.	16276000.00
	SAY	Rs.	162.76 Lakh

T.S. No. 102/267 Date 12/01/2020

Technically Sanction Rs. 16276000 =

In Words Rs. One crore sixty two lakh seventy six thousand only
Name of Work Detailed estimate for construction of 50 seater Tribal girls Ashram at Bada dhanpali block Kharisra Buli Rajpara


Chief Engineer
& Rural Officer Tribal Department
Planning & Rural Development
C.S. Rajpur


Assistant Engineer
S.T. & S.C. Development
Rajpur

DETAILED ESTIMATE FOR 50 BED ASHRAM BHAVAN

FOR TRIBAL DEVELOPMENT DEPARTMENT

As per PWD Building DOR - 01.01.2015

BUILDING WORKS

SN	REF	DESCRIPTION	NO	L	W	HD	QTY	UNIT	RATE	AMOUNT
1	1.1	Excavation for all types and sizes of foundations, trenches and drains for any other purpose including disposal of excavated stuff upto 1.5 m or less (not) total upto 20m (at least 5m away from the excavated area), including dressing and loading of stuff								
	1	In all types of soils								
		earth excavation	1	011.15	0.40	0.30	72.24			
		F1 C1	65	2.30	2.30	2.00	629.20			
		F2 C2	10	2.40	2.40	2.00	115.20			
		F3 C3	44	1.00	1.00	2.00	368.12			
		F4 C4	3	2.00	2.00	2.00	24.00			
							1126.56	cum	195.20	20448.24
2	1.8	Extra for every additional 10' or 15' or per foot								
	1	In all types of soils								
		F1 C1	65	2.30	2.30	0.50	157.30			
		F2 C2	10	2.40	2.40	0.80	24.00			
		F3 C3	44	1.00	1.00	0.00	71.28			
		F4 C4	3	2.00	2.00	0.50	8.00			
							260.58	cum	25.30	6976.57
3	1.17	Filling from available excavated stuff (excluding rock) in trenches, plinth, sides of foundation etc. in layers not exceeding 20cm in depth consolidating each deposited layer by ramming and watering with a load upto 50 kg and 10 upto 1.5 kg								
		Plinth filling								
		Sub-right wing rooms	15	7.00	5.00	1.00	350.00			
		corridor	2	1.00	22.00	1.00	76.92			
		stairs	2	3.75	5.00	1.00	37.00			
			2	3.10	5.00	1.00	31.00			
		Back wing Rooms	3	6.00	7.00	1.00	126.00			
		teachers room + kitchen	2	3.95	5.00	1.00	39.50			
		total corridor	2	2.10	5.00	1.00	21.00			
		back right wing corridor	2	11.50	1.85	1.00	112.68			
		front wing wing bed rooms	2	3.38	3.50	1.00	23.78			
		oil + kitchen	2	2.30	2.40	1.00	10.84			
		total	1	2.30	1.30	1.00	2.64			
		store	1	1.20	2.40	1.00	2.88			
		total	1	1.20	5.30	1.00	8.00			
		hall	1	3.80	6.00	1.00	18.00			
		entrance	1	3.00	1.40	1.00	4.20			
		entrance	1	7.50	6.00	1.00	45.00			
		porch	1	7.00	6.30	0.40	18.00			
		storehouse (kitchen)	1	3.00	4.05	1.00	12.15			
		oil room	1	3.00	1.40	1.00	4.20			
		oil room	1	3.00	1.75	1.00	5.25			
		dining hall	1	6.00	7.60	1.00	38.00			
		room + kitchen	2	1.70	2.40	1.00	8.16			
		kitchen	1	3.60	3.00	1.00	18.00			
		total filling required in plinth					1020.08			
		only 20% of total required filling is plinth done with excavated stuff	20%	1020.08			204.02	cum	85.00	13291.84

Sl. No.	Ref	DESCRIPTION	M2	L	W	HD	QTY	UNIT	RATE	AMOUNT
4	1.10	Providing and laying in place with sand/Gravel and top bed, minimum under floor in layers not exceeding 20cm in depth consolidating each deposited layer by ramming and watering, including finishing etc. complete.								
		Filling in column pits								
		total excavation as in 1.1.1	1	1125.85					1125.85	
		base concrete in column pit as in 3.1.3	1	103.45					-103.45	
		net in footing as in 3.2.5	1	151.47					-151.47	
		balance 80% of total required filling in pits	80%	1020.08					816.06	
							1607.39	cum	371.05	80243.14
5	3.1	Providing and laying nominal mix plain concrete concrete with crushed stone aggregate using concrete mixer in all works upto plinth level including cost of form work.								
	3	1:1:1 (1 cement : 3 coarse sand : 6 graded stone aggregate 40mm nominal size) below beam	1	811.73	3.40	0.10	24.48			
		F1-C1	68	2.20	2.20	0.15	47.19			
		F2-C2	10	2.40	2.40	0.15	8.84			
		F3-C3	44	1.80	1.80	0.15	21.36			
		F4-C4	3	2.00	2.00	0.15	1.05			
						A =	103.40			
		left-right wing masonry	10	7.00	5.00	0.10	35.00			
		corner	2	1.80	22.20	0.10	7.96			
		steps	2	3.70	3.00	0.10	3.70			
			2	3.10	3.00	0.10	3.10			
		back wing masonry	2	6.00	7.00	0.10	12.60			
		headwork beam + masonry	2	3.90	3.00	0.10	3.90			
		wall corner	2	2.10	5.00	0.10	2.10			
		back - front wing corner	2	11.30	1.80	0.10	11.27			
		front wing wing bed masonry	2	3.20	3.00	0.10	2.38			
		etc + masonry	2	3.20	2.40	0.10	1.58			
		gate	1	2.20	1.20	0.10	0.26			
		door	1	1.20	2.40	0.10	0.28			
		toilet	1	1.20	5.00	0.10	0.60			
		hall	1	3.00	5.00	0.10	1.00			
		verandah	1	3.00	1.40	0.10	0.42			
		entrance	1	7.50	6.00	0.10	4.50			
		porch	1	7.50	6.38	0.10	4.73			
		alcove floor	1	3.00	4.00	0.10	1.22			
		sid wall	1	3.00	1.40	0.10	0.42			
		sid room	1	3.00	1.75	0.10	0.53			
		dinning hall	1	5.00	7.00	0.10	3.50			
		store + wash	2	1.70	2.40	0.10	0.82			
		kitchen	1	3.50	5.00	0.10	1.60			
						B =	104.64			
						A+B =	208.30	cum	2570.50	81857.53
6	3.2	Providing and laying nominal mix reinforced concrete concrete with crushed stone aggregate using concrete mixer in all works upto plinth level including cost of form work.								
	4	1:1½:3 (1 cement : 1½ coarse sand : 3 graded stone aggregate 20mm nominal size) RCC in plinth								
		Column footing- F1-C1	55	1.90	1.90	0.20	48.55			
		F2-C2	10	2.10	2.10	0.20	8.82			
		F3-C3	44	1.60	1.50	0.20	19.80			
		F4-C4	3	1.70	1.70	0.20	1.73			
		Expanded- F1, A1 = (1.3 x 1.9 x 3.81), A2 = (0.35 x 0.50 x 0.10), A3 = (1.6 x 0.20 x 2) + (1.9 x 0.20 x 2) = 1.38, 10668 + A2 + 4A3) x 1.55	55	1.95		0.40	40.20			

SN	REF	DESCRIPTION	NO	L	W	HD	QTY	UNIT	RATE	AMOUNT
		Reinforced F2, A1 = (2.1 x 2.1 = 4.41), A2 = (0.45 x 0.55 = 0.25), Am = (2.1 x 0.55)/2 x (2.1 + 0.45)/2 = 1.00, 180(A1 + A2 + 4Am) = 1.00	10	1.30		0.40	7.60			
		Reinforced F3, A1 = (1.5 x 1.5 = 2.25), A2 = (0.35 x 0.45 = 0.16), Am = (1.5 x 0.35)/2 x (1.5 + 0.45)/2 = 0.44, 180(A1 + A2 + 4Am) = 1.00	44	1.00		0.30	13.20			
		Reinforced F4, A1 = (1.7 x 1.7 = 2.89), A2 = (0.41 x 0.45 = 0.20), Am = (1.7 x 0.45)/2 x (1.7 + 0.45)/2 = 1.10, 180(A1 + A2 + 4Am) = 1.20	3	1.20		0.30	1.16			
		column upl groove C1	55	0.30	0.40	1.20	6.60			
		C2	10	0.30	0.40	1.20	1.20			
		C3	44	0.30	0.30	1.20	5.28			
		C4	3	0.30	0.30	1.20	0.36			
						g =	151.47			
		Column in plinth - C1	55	0.30	0.40	1.10	6.72			
		C2	10	0.30	0.40	1.10	1.32			
		C3	44	0.30	0.30	1.10	2.95			
		C4	3	0.30	0.30	1.10	0.14			
		GROUND PLINTH BEAM								
		HORIZONTAL - left + right wing								
		G02, rooms	20	3.10	0.20	0.40	4.96			
		bracket	2	1.00	0.20	0.40	0.16			
		G03, toilet	4	2.30	0.20	0.40	1.16			
			4	3.10	0.20	0.40	1.33			
		G04	4	2.90	0.20	0.40	0.93			
		G01, toilet corridor	4	2.10	0.20	0.30	0.60			
		back wing G01, rooms	8	2.76	0.20	0.30	1.33			
			4	2.60	0.20	0.30	0.67			
		G02, bathroom room + shower	4	1.98	0.20	0.40	1.26			
		back + front corridor, G01	12	3.10	0.20	0.30	2.23			
			4	3.30	0.20	0.30	0.77			
		front wing, bed room, kit, kitchen, G01	8	3.30	0.20	0.40	2.11			
		G01, toilet + shower	4	1.20	0.20	0.30	0.28			
		G02, bath	1	2.35	0.20	0.40	0.24			
			3	3.00	0.20	0.40	0.72			
		G04, veranda	2	7.00	0.20	0.60	1.80			
		G01, porch	2	3.65	0.20	0.30	0.43			
		G02, ramp, side room	4	3.00	0.20	0.40	2.96			
		G03, dining	2	5.00	0.20	0.40	0.90			
		G03, store + wash	2	5.00	0.20	0.40	0.65			
		G02, kitchen	1	3.60	0.20	0.40	0.29			
		bracket	6	1.00	0.20	0.40	0.48			
		VERTICAL - left + right wing								
		G02, rooms, toilet	28	5.00	0.20	0.40	11.70			
		G01, toilet partitions	8	1.40	0.20	0.30	0.67			
		G02, toilet corridor	2	4.60	0.20	0.40	0.83			
		G01, corridor	12	2.85	0.20	0.30	2.20			
			2	2.90	0.20	0.30	0.35			
		bracket	4	2.80	0.20	0.40	0.19			
		back wing, G02, rooms	8	2.07	0.20	0.40	1.94			
		front wing, bed room, G02	2	3.20	0.20	0.40	0.61			
		G03	1	3.20	0.20	0.40	0.28			
		G03, kit	1	3.80	0.20	0.40	0.34			
		G03, kitchen	2	3.60	0.20	0.40	0.65			
		G01, toilet	1	1.20	0.20	0.30	0.07			
		G02, bath + veranda	1	3.80	0.20	0.40	0.32			
			1	3.55	0.20	0.40	0.28			
		G03	1	3.20	0.20	0.40	0.28			
		G04	1	3.15	0.20	0.60	0.41			
		G02, porch	2	4.80	0.20	0.40	0.74			
		G02, staircase	1	3.55	0.20	0.40	0.28			
			1	3.60	0.20	0.40	0.29			
		G03, bath room	1	3.15	0.20	0.60	0.41			

NO	SET	DESCRIPTION	NO	L	W	H	QTY	UNIT	RATE	AMOUNT
		CU	1	3.20	0.20	0.40	0.38			
		CU, above main	2	3.60	0.20	0.40	0.63			
		CU, kitchen	2	3.20	0.20	0.40	0.31			
		bracket	12	0.60	0.20	0.40	0.36			
						Sub	58.69			
						Amount	210.30			
		ACC ABOVE PLUMB								
		Cabinet above plumb : CI	68	0.30	0.40	3.60	18.72			
		CI	18	0.30	0.40	3.60	4.32			
		CI	44	0.20	0.30	3.60	8.58			
		CI	2	0.30	0.30	4.20	1.13			
		SCHEMATIC								
		HORIZONTAL : left + right wing, H1, room	28	3.10	0.20	0.40	4.38			
		bracket	2	1.00	0.20	0.40	0.16			
		H2, hall	4	3.30	0.20	0.40	1.19			
		H1	4	2.90	0.20	0.40	0.93			
		H1, hall corridor	4	2.10	0.20	0.30	0.50			
		back wing H1, room	8	2.70	0.20	0.30	1.33			
			4	2.90	0.20	0.30	0.67			
		H3	2	5.65	0.20	0.50	1.17			
			1	5.90	0.20	0.50	0.59			
		H1, hallways, room + library	4	3.95	0.20	0.40	1.26			
		H3	12	3.10	0.20	0.50	2.23			
			4	3.20	0.20	0.30	0.77			
		front wing, hall rooms, etc, kitchen, H1	8	3.30	0.20	0.40	1.58			
		H1, hall + stair	3	1.20	0.20	0.30	0.22			
		H1, hall	1	2.95	0.20	0.40	0.24			
			2	3.00	0.20	0.40	0.48			
		H4, entrance	3	7.40	0.20	0.40	2.89			
		H1, porch	2	3.55	0.20	0.40	0.87			
		H2, staircase, back room	1	2.90	0.20	0.40	0.27			
			1	3.60	0.20	0.40	0.27			
		H1	1	3.00	0.20	0.40	0.24			
		H2, dining	3	8.00	0.20	0.40	1.38			
		H1, above + wash + kitchen	3	3.60	0.20	0.40	0.86			
		bracket	8	1.00	0.20	0.40	0.48			
		VERTICAL : left + right wing, H2, rooms, hall	36	5.00	0.20	0.40	16.20			
		H2, hall corridor	2	4.60	0.20	0.40	0.83			
		CU, sample	12	2.88	0.20	0.50	2.08			
			2	2.90	0.20	0.50	0.38			
		bracket	4	0.60	0.20	0.40	0.19			
		back wing, H1, room	8	3.00	0.20	0.40	1.34			
		front wing, hall rooms, left, H1	4	3.00	0.30	0.40	1.02			
		H1, old kitchen, stairs, H1	4	3.80	0.20	0.40	1.23			
		H2, entrance	2	3.10	0.20	0.40	0.86			
			2	3.88	0.20	0.40	0.64			
			1	5.00	0.20	0.40	0.34			
			1	3.60	0.20	0.40	0.32			
		stair	3	4.80	0.20	0.40	1.24			
		H2, room	1	3.60	0.20	0.40	0.32			
			1	3.20	0.20	0.40	0.28			
		H1	1	3.60	0.20	0.40	0.29			
			1	3.20	0.20	0.40	0.28			
		H1, stair	1	3.00	0.20	0.40	0.28			
		H1, kitchen	1	3.20	0.20	0.40	0.26			
		bracket	12	0.60	0.20	0.40	0.58			
		VERTICAL, horizontal, left right wing, room	20	3.10	0.20	0.20	2.48			
		bracket	2	1.00	0.20	0.20	0.08			
		stair	2	3.30	0.20	0.20	0.26			
			2	3.70	0.20	0.20	0.30			
		hall corridor	2	3.10	0.20	0.20	0.17			
		back wing H2, room	8	2.78	0.20	0.20	0.88			

SN	REF	DESCRIPTION	NO	L	W	HD	QTY	UNIT	RATE	AMOUNT
			4	2.40	0.20	0.20	0.48			
			02	2	3.80	0.20	0.20	0.47		
			1	4.90	0.20	0.20	0.24			
		BT, teachers room + library	4	3.90	0.20	0.20	0.63			
		back + front corridor	12	3.10	0.20	0.20	1.48			
			4	3.30	0.20	0.20	0.31			
		front wing, bad rooms, c/c, kitchen	6	3.30	0.20	0.20	1.08			
		total + store	4	1.20	0.20	0.20	0.18			
		hall	2	2.30	0.20	0.20	0.24			
			1	3.00	0.20	0.20	0.12			
		entrance	1	7.50	0.20	0.20	0.30			
		sick room	1	2.98	0.20	0.20	0.13			
		dining	2	6.90	0.20	0.20	0.40			
		store + wash, kitchen	3	3.60	0.20	0.20	0.43			
		locker	6	1.00	0.20	0.20	0.24			
		100 mtr wall, total	4	3.90	0.10	0.20	0.31			
		VERTICAL - left + right wing, rooms, total	24	5.00	0.20	0.20	4.80			
		total corridor	2	4.60	0.20	0.20	0.37			
		corridor	12	2.80	0.20	0.20	1.37			
			3	2.90	0.20	0.20	0.23			
		locker	4	0.40	0.20	0.20	0.10			
		back wing, rooms	8	1.83	0.20	0.20	0.97			
		front wing, bad rooms, total corridor	4	3.20	0.20	0.20	0.31			
		oh, kitchen, store, hall	4	3.80	0.20	0.20	0.58			
		entrance	2	3.25	0.20	0.20	0.28			
			3	3.10	0.20	0.20	0.25			
		bench	3	3.38	0.20	0.20	0.27			
		dining, store	3	3.60	0.20	0.20	0.43			
		dining, store	2	3.20	0.20	0.20	0.26			
		locker	12	0.40	0.20	0.20	0.20			
		LOFT, rooms	20	1.80	0.60	0.10	1.20			
		kitchen platform	1	3.50	0.60	0.10	0.22			
			1	3.20	0.60	0.10	0.19			
		locker platform, window	1	3.30	0.60	0.10	0.20			
			1	1.80	0.60	0.10	0.11			
		room shelves	60	2.00	0.60	0.10	7.20			
		store shelf	4	2.40	0.60	0.10	0.58			
			4	1.50	0.60	0.10	0.36			
			4	0.80	0.60	0.10	0.19			
		store shelf, window	4	1.20	0.60	0.10	0.29			
			4	1.58	0.60	0.10	0.47			
		CEILING, left-right wing, room windows	10	1.30	0.60	0.10	1.14			
		total	3	8.00	0.60	0.10	0.36			
			2	3.20	0.60	0.10	0.62			
		back wing, room windows	2	1.90	0.60	0.10	0.23			
			2	3.70	0.60	0.10	0.44			
		teachers room + library	2	1.80	0.60	0.10	0.29			
		front wing windows	1	11.80	0.60	0.10	0.71			
			1	12.40	0.60	0.10	0.74			
		teachers, work	2	1.00	0.60	0.10	0.12			
		corridor	2	27.30	0.60	0.10	3.28			
			2	20.80	0.60	0.10	2.47			
		SLAB, rooms, left-right wing	10	5.00	3.30	0.12	21.00			
			10	5.00	3.30	0.12	19.80			
		corridor total	2	3.70	5.00	0.15	8.55			
			2	3.10	5.00	0.10	4.65			
		total corridor	2	2.10	5.00	0.12	2.52			
		back wing rooms	6	6.00	3.40	0.15	18.36			
		teachers room + library	2	3.95	6.20	0.12	4.74			
		front wing, bad rooms	2	3.30	3.60	0.12	2.86			
		kitchen	1	2.30	2.80	0.12	1.30			

SN	REF	DESCRIPTION	NO	L	W	HTD	QTY	UNIT	RATE	AMOUNT
		door + slab	1	1.20	3.60	0.12	0.63			
			1	1.20	3.60	0.12	0.63			
		slab	1	3.60	3.60	0.12	1.37			
			1	3.60	3.60	0.12	1.30			
		entrance	2	3.60	3.60	0.10	4.16			
			2	3.60	3.60	0.10	3.84			
		pitch	2	3.60	4.70	0.10	6.18			
		back room	1	1.75	3.00	0.12	0.83			
		dining	1	6.00	3.60	0.12	2.28			
			1	6.00	3.60	0.12	2.10			
		kitchen	1	3.60	3.60	0.12	1.56			
		store + work	1	3.30	3.30	0.12	1.84			
		slab (stairs) 0.30 x 0.15 x 0.12 = 0.0054	24	1.40		0.02	0.67			
		wall slab	1	4.1	1.4	0.10	0.88			
			1	3	1.4	0.10	0.83			
						B =	340.40			
		RCC WORK ON F.F.								
		Column: C1	3	0.30	0.40	2.60	0.63			
		C2	3	0.30	0.40	2.60	1.89			
		slab beam B1	3	3.00	0.30	0.40	0.72			
		B1	2	3.60	0.30	0.40	0.69			
		B1	2	3.30	0.30	0.40	0.81			
		slab	1	3.80	3.00	0.12	1.37			
			1	3.00	3.00	0.12	1.30			
		staircase	1	1.40	0.30	0.10	0.08			
						C =	6.23			
						A+B+C =	487.05	cum	4163.00	1802717.85
7	3.4	Rate for laying REINFORCE of any grade in superstructure above path level for every foot or part thereof in addition to rate for handling and waste.								
		OP, Qty of total "B" is 32.1	1	340.40			340.40	cum	97.50	23444.87
		PF, Qty of total "C" is 32.1, rate 2 times	2	6.23			12.47	cum	97.50	1215.44
8	3.12	Providing and placing in position reinforcement for R.C.C. work including straightening, cutting, bending, binding etc. complete as per drawings including cost of binding wire in foundation and plain slabs complete.								
	1	Thermo-Mechanically treated bars FE 415 wt. @ 110 kg/cum.	1	407.08		110.00	00276.97	kg	54.90	2740040.52
9	3.13	Providing and laying damp proof course (up to 10mm thick) with plain cement concrete 1:2:4 (1 cement : 2 coarse sand : 4 graded crushed stone aggregate) 20mm nominal size including form work.								
		external, left right wing, rooms	25	3.15	0.20	0.05	0.62			
		bracket	2	1.00	0.20	0.05	0.03			
		total	2	3.30	0.20	0.05	0.07			
			3	3.75	0.20	0.05	0.07			
		land corridor	2	2.13	0.25	0.05	0.04			
		back wing, rooms	4	0.05	0.20	0.05	0.23			
			2	0.90	0.20	0.05	0.12			
		staff room + library	4	0.95	0.20	0.05	0.16			
		back + front corridor	12	3.15	0.25	0.05	0.37			
			4	3.30	0.20	0.05	0.13			
		back wing, bed rooms, mts, kitchen	8	3.30	0.20	0.05	0.28			
		total + door	4	1.20	0.20	0.05	0.05			
		hall	2	2.95	0.20	0.05	0.06			
			1	3.00	0.20	0.05	0.03			
		entrance	1	7.50	0.20	0.05	0.08			

SN	REF	DESCRIPTION	NO	L	W	H/D	QTY	UNIT	RATE	AMOUNT
		bed room	1	3.85	0.20	0.05	0.03			
		dining	2	6.50	0.20	0.05	0.10			
		store + wash kitchen	3	3.80	0.20	0.05	0.11			
		bracket	6	1.00	0.20	0.05	0.06			
		100 mm wall, tiled	4	3.80	0.10	0.05	0.06			
		VERTICAL - left + right wing, rooms, tiled	24	5.00	0.20	0.05	1.20			
		total corridor	2	4.60	0.20	0.05	0.09			
		corridor	12	2.85	0.20	0.05	0.34			
			2	2.90	0.20	0.05	0.06			
		bracket	4	6.50	0.20	0.05	0.02			
		back wing, rooms	8	3.03	0.20	0.05	0.24			
		front wing, bed room, toilet verandah	4	3.20	0.20	0.05	0.12			
		etc, kitchen, store, hall	4	3.60	0.20	0.05	0.14			
		entrance	2	3.85	0.20	0.05	0.07			
			2	3.10	0.20	0.05	0.06			
		dining, store	3	3.60	0.20	0.05	0.11			
		dining, store	2	3.20	0.20	0.05	0.06			
		bracket	12	6.60	0.20	0.05	0.07			
							3.29	sum	4237.00	22417.34
10	2.15	Applying a coat of hot bitumen 40-10 using @ 1.7kg/ sqm on damp proof course after cleaning the surface with brushes and finally with a piece of cloth lightly soaked in kerosene oil								
		horizontal, left right wing, rooms	20	3.10	0.20		12.40			
		bracket	2	1.00	0.20		0.40			
		total	2	3.20	0.20		1.32			
			2	3.70	0.20		1.48			
		total corridor	2	3.10	0.20		0.34			
		back wing, rooms	4	3.80	0.20		4.68			
			2	6.90	0.20		2.36			
		staff room + library	4	3.95	0.20		3.16			
		back + front corridor	12	3.10	0.20		7.44			
			4	3.20	0.20		2.56			
		front wing, bed room, etc, kitchen	8	3.30	0.20		5.28			
		total + store	4	1.20	0.20		0.96			
		hall	2	2.95	0.20		1.18			
			1	3.00	0.20		0.60			
		entrance	1	7.50	0.20		1.50			
		self room	1	2.95	0.20		0.59			
		dining	2	6.00	0.20		3.00			
		store + wash kitchen	3	3.60	0.20		2.16			
		bracket	6	1.00	0.20		1.20			
		100 mm wall, tiled	4	3.80	0.10		1.56			
		VERTICAL - left + right wing, rooms, tiled	24	5.00	0.20		24.00			
		total corridor	2	4.60	0.20		1.84			
		corridor	12	2.85	0.20		6.34			
			2	2.90	0.20		1.16			
		bracket	4	6.50	0.20		0.48			
		back wing, rooms	8	3.03	0.20		4.86			
		front wing, bed room, toilet verandah	4	3.20	0.20		2.56			
		etc, kitchen, store, hall	4	3.60	0.20		2.88			
		entrance	2	3.85	0.20		1.42			
			2	3.10	0.20		1.24			
		dining, store	3	3.60	0.20		2.16			
		dining, store	2	3.20	0.20		1.28			
		bracket	12	6.50	0.20		1.44			
							105.82	sqm	62.50	6663.88
11	2.1	Providing and fixing form work including cutting, chaffing, strutting, staging, propping bracing etc, complete and including its removal at all levels, for								

SN	REF	DESCRIPTION	NO	L	W	HD	QTY	UNIT	RATE	AMOUNT
	1	Foundations, footings, bases of columns, piers, beams, column wall in any shape and size and all type of wall below plinth level								
		Column footing - F1 C1	68	7.60		0.20	38.80			
		F2 C2	18	8.40		0.20	16.80			
		F3 C3	44	6.00		0.20	52.80			
		F4 C4	2	6.80		0.20	4.08			
		column upto plinth - C1	65	7.20		2.35	183.30			
		C2	10	7.40		2.35	30.80			
		C3	44	7.00		2.43	107.80			
		C4	2	7.20		1.85	6.66			
		GRD, rooms	20	2.10	1.00		62.00			
		brockel	2	1.00	1.00		2.00			
		GRD, hall	4	3.30	1.10		14.52			
			4	3.70	1.10		16.38			
		GRD	4	2.90	1.00		11.60			
		GR1, wall corner	4	2.10	0.80		6.72			
		back wing GRM, rooms	4	3.80	1.20		28.08			
			2	6.00	1.20		14.16			
		hall room + library, GR2	4	3.95	1.00		15.80			
		back + hall corner, GR1	12	3.10	0.80		29.76			
			4	3.20	0.80		10.24			
		hall wing, bed room, etc, brockel, GR2	4	3.30	1.00		26.40			
		GR1, toilet + stove	4	1.20	0.80		3.84			
		GR2, hall	1	2.90	1.00		2.90			
			2	3.00	1.00		9.00			
		GR1, entrance	2	7.80	1.80		32.50			
		GR1, porch	2	1.55	0.80		5.48			
		GR2, staircase, sick room	4	3.00	1.00		12.00			
		GR1, dining	2	5.00	1.10		11.00			
		GR2, store + wash	2	3.60	1.10		7.92			
		GR2, kitchen	1	3.60	1.20		3.60			
		brockel	2	1.00	1.00		6.00			
		GR2, rooms, total	26	3.00	1.10		143.00			
		GR1, total partitions	8	1.40	0.80		8.96			
		GR3, toilet corner	2	4.60	1.10		10.12			
		GR1, corner	12	2.80	0.80		27.36			
			2	2.90	0.80		4.84			
		brockel	4	0.60	1.00		2.40			
		back wing, GR2, rooms	8	3.03	1.00		24.24			
		hall wing, bed room, GR2	2	3.20	1.00		6.40			
		GR3	1	3.20	1.10		3.52			
		GR2, etc	1	3.80	1.10		4.18			
		GR3, kitchen	2	3.60	1.10		7.92			
		GR1, toilet	1	1.20	0.80		0.96			
		GR1, hall + verandah	1	3.40	1.10		3.96			
			1	3.55	1.00		3.55			
		GR3	1	3.20	1.10		3.52			
		GR3	1	2.15	1.50		4.73			
		GR1, porch	2	3.38	0.80		5.36			
		GR2, staircase	1	3.55	1.00		3.55			
			1	3.80	1.00		3.60			
		GR3, sick room	1	3.15	1.00		4.73			
		GR2	1	3.20	1.00		3.20			
		GR2, store, wash	2	3.60	1.10		7.92			
		GR2, kitchen	2	3.20	1.00		6.40			
		brockel	12	0.60	1.00		7.20			
							1126.60	sqm	138.00	156597.48
	2	Columns, Pillars, Feet and Base- rectangular or square in shape								
		Column above plinth - C1	85	1.20		3.40	289.00			

SN	REF	DESCRIPTION	NO	L	W	NO	QTY	UNIT	RATE	AMOUNT
			C2	10	1.40		140	55.40		
			C3	44	1.20		528	156.40		
			C4	3	1.20		4.20	13.12		
		staircase floor	C5	3	1.20		3.60	9.36		
			C7	3	1.40		4.20	10.92		
							129.00	sqm	297.00	155901.00
7		suspended floor, riser, stairs platform, bayonet (both surfaces) and shelves (cast in situ)								
		SLAB, room, left-right wing	10	5.00	1.50		150.00			
			10	5.00	3.30		165.00			
		corridor toilet	2	3.70	5.00		37.00			
			2	3.10	5.00		31.00			
		toilet corridor	2	2.10	5.00		21.00			
		back wing rooms	6	6.00	3.40		122.40			
		roof rooms + stairs	2	3.50	5.00		35.00			
		front wing, bed rooms	2	3.30	3.60		23.76			
		kitchen	1	3.30	3.00		12.54			
		store + toilet	1	1.20	3.60		4.32			
			1	1.20	3.60		4.32			
		hall	1	3.80	3.00		11.40			
			1	3.60	3.00		10.80			
		entrance	2	5.60	3.60		20.16			
			2	3.60	3.60		25.92			
		porch	2	3.60	4.70		34.32			
		ack room	1	1.70	3.00		5.10			
		driving	1	5.00	3.60		18.00			
			1	5.00	3.60		18.00			
		kitchen	1	3.60	3.60		12.96			
		store + work	1	3.60	3.60		12.96			
		LIFT, room	25	1.50	0.60		12.00			
		kitchen platform	1	3.60	0.60		2.16			
			1	3.20	0.60		1.92			
		kitchen platform, window	1	3.30	0.60		1.98			
			1	1.80	0.60		1.08			
		main shelves	60	2.00	0.60		72.00			
		store shelf	4	2.40	0.60		5.76			
			4	1.50	0.60		3.60			
			4	0.80	0.60		1.92			
		store shelf, window	4	1.20	0.60		2.88			
			4	1.50	0.60		4.32			
							925.48	sqm	335.00	211487.00
8		Roofs, truss, columns & walls								
		HYPERBOLIC, left + right wing, RT, rooms	22	3.10	1.00		62.00			
		bracket	2	1.00	1.00		2.00			
		RT, wall	4	3.70	1.10		14.32			
		RT	4	2.00	1.00		11.60			
		RT, wall window	4	2.10	0.80		6.72			
		back wing RT, rooms	4	5.80	1.20		42.12			
			3	5.90	1.20		21.24			
		back + front corridor, RT	2	3.90	1.00		7.80			
		RT	12	3.10	0.80		25.76			
			4	3.20	0.80		10.24			
		front wing, bed rooms, etc, kitchen, RT	8	3.30	1.00		16.80			
		RT, toilet + store	2	1.20	0.80		3.84			
		RT, hall	1	2.90	1.00		2.90			
			2	3.00	1.00		6.00			
		RT, entrance	3	7.40	1.50		33.30			
		RT, porch	2	3.50	1.00		7.10			
		RT, staircase, lock door	1	2.90	1.10		3.19			
			1	3.00	1.10		3.30			
		RT	1	3.00	1.00		3.00			

SN	REF	DESCRIPTION	NO	L	W	HD	QTY	UNIT	RATE	AMOUNT
		RT, dining	2	3.00	1.10		16.50			
		RT, store + wash + kitchen	3	3.60	1.00		12.50			
		bracket	6	1.00	1.00		6.50			
		VERTICAL - left + right wing, RT, rooms, toilet	24	3.00	1.10		138.00			
		RT, toilet corridor	2	4.60	1.10		10.10			
		toilet, corridor	12	2.55	0.60		27.50			
			2	2.60	0.60		4.64			
		bracket	4	0.60	1.00		2.40			
		back wing, RT, rooms	8	3.00	1.00		24.24			
		front wing, bed room, hall, RT	4	3.20	1.00		12.80			
		RT, rms. kitchen, store, RT	4	3.60	1.00		18.20			
		RT, entrance	2	3.60	1.10		7.90			
			2	3.55	1.10		7.81			
		path	2	3.30	1.10		7.37			
		RT, room	1	3.60	1.10		3.95			
			1	3.20	1.10		3.50			
		RT	1	3.60	1.00		3.60			
			1	3.20	1.00		3.20			
		RT, store	1	3.60	1.00		3.60			
		RT, kitchen	1	3.20	1.00		3.20			
		bracket	12	0.60	1.00		7.20			
		UNITED, horizontal, left-right wing, rooms	20	3.10	0.60		37.20			
		bracket	2	1.00	0.60		1.20			
		toilet	2	3.30	0.60		3.96			
			2	3.10	0.60		4.44			
		toilet corridor	2	2.10	0.60		2.52			
		back wing, rooms	4	3.65	0.60		14.04			
			2	3.50	0.60		7.08			
		back + front entrance	2	3.95	0.60		4.74			
			12	1.10	0.60		22.32			
			4	3.20	0.60		7.68			
		front wing, bed rooms, rms, kitchen	8	3.30	0.60		13.64			
		toilet + store	4	1.20	0.60		2.88			
		hall	2	2.65	0.60		3.54			
			1	3.00	0.60		1.80			
		entrance	1	7.50	0.60		4.50			
		back room	1	2.95	0.60		1.77			
		dining	2	3.60	0.60		6.50			
		store + wash, kitchen	3	3.60	0.60		6.48			
		bracket	8	1.00	0.60		3.60			
		RT room west, toilet	4	3.90	0.60		7.80			
		VERTICAL - left + right wing, rooms, toilet	24	3.00	0.60		72.00			
		toilet corridor	2	4.60	0.60		9.32			
		corridor	12	2.55	0.60		30.30			
			2	2.60	0.60		3.48			
		bracket	4	0.60	0.60		1.44			
		back wing, rooms	8	0.60	0.60		14.34			
		front wing, bed room, toilet verandah	4	3.20	0.60		7.50			
		rms, kitchen, store, hall	4	3.60	0.60		8.64			
		entrance	2	3.95	0.60		4.26			
			2	3.10	0.60		3.72			
		path	2	3.30	0.60		4.02			
		dining, store	3	3.60	0.60		6.48			
		dining, store	2	3.20	0.60		3.84			
		bracket	12	0.60	0.60		4.32			
							989.97	sqm	322.00	199771.74
13		Weather shade, drings, Curtains and installings								
		CHALLA, left-right wing, room windows	10	1.80	0.90		11.40			
		toilet	2	3.00	0.60		3.60			
			2	3.20	0.60		6.24			
		back wing, room windows	2	1.90	0.50		2.28			

SN	REF	DESCRIPTION	NO	L	W	H	QTY	UNIT	RATE	AMOUNT
			2	3.75	0.80		4.44			
		front wing window	1	11.80	0.80		7.08			
			1	12.40	0.80		7.44			
		balcon, wood	2	1.00	0.80		1.30			
		ceiling	2	27.30	0.80		32.76			
			2	28.60	0.80		34.72			
							107.16	sqm	294.00	31505.04
15		floor cover of all types, including spiral and hidden plate type, including risers and landings								
		steps, 2 sides = 24 nos x 2 = 48, (triangle 0.20 + 0.15 x 1/2 = 0.02)	48			0.02	0.36			
		wall slab	1	4.1	1.6		6.56			
			1	3	1.6		4.80			
							12.32	sqm	230.00	2833.60
12	7.5	brick work with modular finish lime bricks (1st G bricks) conforming to IS 12914:2012 of class designation 4.0 in foundation and plinth in								
	4	Cement Mortar 1:3:11 (current - 6 course sand)								
		brick to plinth								
		brick work other ground level	1	611.13	0.20	0.20	24.45			
		brick work upto plinth								
		HORIZONTAL - left + right wing, rooms, GND	20	3.10	0.20	0.70	6.80			
		bracket	2	1.00	0.20	0.70	0.28			
		wall, GND	4	3.30	0.20	0.85	1.73			
		GND	4	1.80	0.20	0.70	1.62			
		half corner, GND	4	2.10	0.20	0.80	1.34			
		back wing, rooms	4	1.85	0.20	0.80	2.81			
			2	1.90	0.20	0.80	1.42			
		staff room + library, GND	4	1.85	0.20	0.70	2.21			
		front wing, bed rooms, rm, kitchen, GND	8	1.70	0.20	0.70	3.70			
		wall + stone, GND	2	1.30	0.20	0.80	0.88			
		bal, GND	2	3.00	0.20	0.70	0.84			
		entrance, GND	1	1.00	0.20	0.40	0.68			
		GND staircase, rock work, GND	2	1.85	0.20	0.70	0.83			
		GND	1	1.00	0.20	0.70	0.42			
		dining, GND	2	0.00	0.20	0.65	1.30			
		store + wash, GND	2	1.60	0.20	0.65	0.94			
		store, GND	1	3.60	0.20	0.70	0.50			
		bracket	4	1.00	0.20	0.70	0.84			
		VERTICAL - left + right wing, rooms, first + 2nd + 3rd floors	24	0.00	0.20	0.85	16.40			
		wall corner, GND	2	4.65	0.20	0.65	1.20			
		bracket	4	0.90	0.20	0.70	0.54			
		back wing, rooms, GND	8	1.80	0.20	0.70	1.39			
		front wing, bed rooms, GND	2	3.20	0.20	0.70	0.90			
		wall, GND	2	3.20	0.20	0.65	0.83			
		rm, toilet, GND	1	1.80	0.20	0.65	0.49			
		kitchen, store, GND	3	3.80	0.20	0.58	1.48			
		entrance, GND	2	3.55	0.20	0.70	0.99			
		GND	2	1.15	0.20	0.45	0.57			
		wash, GND	1	1.60	0.20	0.70	0.50			
		GND	2	1.20	0.20	0.70	0.50			
		GND	1	3.80	0.20	0.65	0.47			
		wash, GND	1	1.80	0.20	0.65	0.47			
		kitchen, GND	1	1.20	0.20	0.70	0.40			
		bracket	12	0.80	0.20	0.70	1.01			
						A =	84.72			
		brick stone plinth								
		HORIZONTAL - left + right wing								
		HORIZONTAL - left + right wing, rooms, first	20	3.10	0.20	1.20	29.48			
		bracket, GND	2	1.00	0.20	1.20	1.28			

SN	REF	DESCRIPTION	NO	L	W	HQ	QTY	UNIT	RATE	AMOUNT
		sum, 10	4	3.30	0.20	3.15	8.32			
		10	4	2.30	0.20	3.20	7.42			
		hall corridor, 10	4	2.10	0.20	3.20	6.54			
		back wing, 10	4	5.85	0.20	3.10	14.51			
		10	2	5.30	0.20	3.10	7.32			
		club room + library, 10	4	3.30	0.20	3.20	10.11			
		front wing, bed room, 10	3	3.30	0.20	3.20	14.98			
		bed + store, 10	3	1.20	0.20	3.30	2.38			
		hall, 10	2	3.00	0.20	3.20	2.64			
		entrance	1	7.50	0.20	2.95	4.43			
		GGE, entrance, and store, 10	2	2.85	0.20	3.20	3.78			
		1	1	3.00	0.20	3.20	1.42			
		store, 10	2	5.00	0.20	3.15	8.30			
		store + work, 10	2	3.80	0.20	3.15	4.54			
		store, 10	1	3.80	0.20	3.20	2.39			
		bedroom, 10	5	1.00	0.20	3.20	3.64			
		VENTILATOR - left + right wing, rooms, 10	24	6.00	0.20	3.15	70.60			
		hall corridor, 10	2	4.80	0.20	3.15	5.80			
		bedroom, 10	4	0.60	0.20	3.20	1.64			
		back wing, rooms, 10	8	3.00	0.20	3.20	15.51			
		front wing, bed room, 10	2	5.20	0.20	3.20	4.10			
		bed, 10	2	3.20	0.20	3.15	4.00			
		on, bed	1	3.80	0.20	3.15	2.39			
		Kitchen, store, 10	3	3.80	0.20	3.15	7.18			
		entrance, 10	1	3.50	0.20	3.20	4.54			
		2	2	3.15	0.20	2.95	3.72			
		room, 10	1	3.40	0.20	3.20	2.30			
		10	2	3.10	0.20	3.20	4.10			
		10	1	3.80	0.20	3.15	3.27			
		work, 10	1	3.80	0.20	3.15	2.27			
		Kitchen, 10	1	3.20	0.20	3.20	2.05			
		bedroom	12	0.80	0.20	3.20	4.61			
						B =	288.40			
		Disturbance								
		10	1	2.00	0.20	3.00	-1.20			
		10	3	1.20	0.20	2.10	-2.32			
		10	10	1.00	0.20	2.10	-6.30			
		10	3	0.90	0.20	2.10	-2.25			
		10	28	1.50	0.20	1.30	-8.75			
		10	4	1.00	0.20	1.70	-1.36			
		10	3	1.00	0.20	0.90	-0.81			
		10	19	0.90	0.20	0.80	-3.05			
						C =	-26.26			
		Brick on FF								
		perpet	1	200.00	0.20	0.00	52.20			
		slab beam, 10	3	3.00	0.20	2.20	3.96			
		10	2	3.60	0.20	2.20	3.17			
		10	2	3.20	0.20	2.20	2.82			
		bedroom	1	1.00	0.20	2.10	-0.42			
						D =	51.72			
						A+B+C+D =	404.58	cum	3263.95	1324871.85
13	7.6	Extra for brick work in superstructure above plinth level for every floor or part thereof in addition to rate for foundation and plinth.								
		Brick on GF, Qty B+C as in 7.5.4	1	260.14			260.14	cum	121.00	31476.41
		Brick on FF, Qty D as in 7.5.4, Floor 2 times	2	41.72			123.48	cum	121.00	14837.21
14	7.11	Half brick, back brick masonry with fly ash lime bricks (Full brick) conforming to IS 12654-2010 of class designation 40 in superstructure above plinth level upto 15th level.								

SN	REF	DESCRIPTION	NO	L	W	HD	QTY	UNIT	RATE	AMOUNT
	2	Concrete M200 1:4 (1 cement : 4 coarse sand)	4	1.50	2.10		32.75			
			12	1.50	2.10		37.50			
		work on	2	1.20	1.40		6.64			
		Drilled pipe	14	0.75	2.10		-22.05			
							57.15	sqm	382.00	21931.35
15	7.12	Cuts for half brick work in superstructure above plinth level for every story or part thereof in addition to rate for cuts plinth level					57.15	sqm	11.00	628.65
16	7.23	Cuts for pointing and plaster in position lapping 25x100 mm or 2 Nos. bricks dia 100 mm reinforcement at every third course of half brick masonry					57.15	sqm	62.50	3571.88
17	8.140	Pointing and filling factory made UPVC door frame made of UPVC profile sections having an overall dimension as below (tolerance ± 1 mm) with wall thickness 2.0mm ± 0.2 mm, corners of the door frame to be jointed with galvanized brackets and stainless steel screws, joints milled and plastic welded. The hinge side vertical of the frame reinforced by galvanized M.S. tube of size 10 X 10mm and wall ± 0.1 mm wall thickness and 3 nos. stainless steel hinges fixed to the frame complete as per manufacturers specification and direction of Engineer-in-charge								
	2	Estimated section Profile size 42x55 mm								
		For inlet doors	14	4.95			69.30	metre	155.00	11582.80
18	8.154	Providing and fixing 30mm thick fireproof reinforced glass (F.R.P.) flush door shutter in different plain and wood finish made with fire retardant grade cross-laminated polyurethane resin, moulded to 30mm thick FRP laminate all around, with suitable wooden blocks inside at vertical places for fixing of hinges and polyurethane foam (PUF) / Polystyrene foam to be used as filler material throughout the hollow panel, coated monolithically with finishing preparation of F.R.P. laminate conforming to table - 2 of IS-14050-2000, complete	14	0.75	2.10		22.05	sqm	2085.00	97218.75
19	8.16	Providing and fixing M.S. frames of doors, windows, ventilators and cupboards joints milled and welded with 10x3 mm legs 10cm long embedded in concrete blocks 15x10x10cm of grade M 10 or with wooden plugs and screws or with steel fastener or steel plugs and screws or with fixing clips or with bolts and nuts as required including filling of cavity with putty and hinges and screws and applying a priming coat of approved steel primer								
	2	Angle iron frames								
		Wt of steel @ 5.5 kg / m (ISA 50x50)								
		D1	1	6.00		1.80	36.40			
		D2	5	5.40		1.80	182.40			
		D3	15	5.20		1.80	295.40			
		D4	6	8.10		1.80	118.28			
							541.48	Pq	73.50	40107.48

SN	REF	DESCRIPTION	NO	L	W	H/D	QTY	UNIT	RATE	AMOUNT
20	8.12	Providing and fixing 8mm door shutters conforming to IS : 2002 (Part II), decorative type One of black based construction with frame of fine class hard wood and well matched back ply veneering with vertical grain of cross band and face veneers on both faces of shutters excluding joints								
	1	40mm thick (single leaf)								
		D1	1	3.00		3.00	6.00			
		D2	5	1.20		2.10	12.00			
		D3	15	1.00		2.10	31.50			
		D4	6	0.90		2.10	11.34			
							61.44	sqm	2467.00	151572.48
21	8.13	Same for double leaf shutter instead of single leaf								
		D1	1	2.00		3.00	6.00			
		D2	5	1.20		2.10	12.00			
							18.00	sqm	52.00	937.20
22	8.14	Providing and fixing in position collapsible steel shutters with vertical stannite 25x10x2mm and lined with bit latex (impervious 25Grits size with top and bottom rails of 1.0mm thick) 25x25mm with 10mm steel pulleys complete with bolts, nuts, locking arrangement, stoppers, handles including applying a priming coat of red oxide zinc chromate primer.								
		D1	1	2.00		3.00	6.00	sqm	3330.00	19980.00
23	8.15	Providing and fixing MS round and square bars with MS bar of required pattern is welded frame for windows & clerestory windows including applying a priming coat of red oxide zinc chromate primer, welding etc complete								
	1	25mm dia								
		Weight of steel @ 25 kg per run								
		R1	25	1.50	1.30	25.00	1218.75			
		R2	4	1.00	1.20	25.00	150.00			
		R3	4	1.50	0.90	25.00	135.00			
		R	15	0.90	0.60	25.00	255.00			
							1760.25	kg	68.00	121057.80
24	8.17	Providing and fixing antique SS finished brass butt hinges with antique SS polished MS screw complete								
	1	125x125 30mm (Heavy Type)	31	3.00			93.00	each	254.00	23802.00
	2	100x100 50 mm (Heavy Type)	14	3.00			42.00	each	254.00	10752.00
25	8.19	Providing and fixing antique SS finished brass sliding door lock with necessary bolts, nuts and antique SS polished MS screw complete								
	1	50x10mm	25				25.00	each	496.00	12400.00
	2	25x10mm	14				14.00	each	483.00	6848.00
26	8.20	Providing and fixing antique SS finished brass door lock with antique SS polished MS screw complete								
	1	50x10x5 mm	25				25.00	each	424.00	10600.00
	2	25x10x5 mm	14				14.00	each	424.00	5936.00
28	8.21	Providing and fixing antique SS finished brass door bolts (flange type) with antique SS polished MS screw complete								
	1	25x10 mm	45	1.00			45.00	each	297.00	13365.00

SN	REF	DESCRIPTION	NO	L	W	HD	QTY	UNIT	RATE	AMOUNT
27	8.84	Providing and fixing antique SS finished brass handles with antique SS painted MS screws complete.								
	1	125 mm	48	250			90.00	each	66.50	5985.00
28	8.90	Providing & fixing 150mm antique SS finished brass floor door stopper with rubber cushion and antique SS painted MS screws complete to not be shifter thickness								
	1	50x150mm	31				31.00	each	77.00	2387.00
29	8.47	Providing and fixing aluminium work for doors, windows, ventilators and partitions made out of extruded aluminium standard sections (main section with minimum 1.5mm thickness) conforming to IS 755, IS 1235 mixed and painted mechanically including aluminium Gaskets, neoprene weather stripping gasket bonded edge bonding, screws fully fixed in wall door with fixing clips or hold fasteners in both and not as required aluminium sections shall be anodized transparent or dyed to approved shade according to IS 1008, minimum anodic coating shall be of grade AC-15. (Glazing to be paid for separately)								
	1	For fixed portion								
		W of frame @ 3.1 kgs/m								
		W1	25	1.00	1.30	3.00	148.20			
		W2	4	1.00	1.70	3.00	20.40			
		W/E	4	1.00	0.90	3.00	16.20			
		V	19	0.90	0.60	2.00	36.78			
							213.58	Kg	331.00	70711.65
	2	For shifter of doors, windows & ventilators including providing and making provision for being of fitting wherever required including the cost of PVC/ neoprene gasket required (Fittings shall be paid for separately)								
		W of frame @ 3.2 kgs/m, W1								
		W1	25	1.00	1.30	3.20	196.00			
		W2	4	1.00	1.70	3.20	21.76			
		W/E	4	1.30	0.90	3.20	17.28			
		V	19	0.90	0.60	3.20	32.80			
							227.84	Kg	338.00	77026.74
30	8.48	Cost for powder coated premium SS screws aluminium sections instead of anodized rate 8-47.1 -8-47.2					441.00	Kg	27.00	11926.35
31	8.51	Providing and fixing glazing in aluminium door, window, ventilator shutters and partitions etc. with PVC/ neoprene gasket etc. complete. (Cost of aluminium snap bonding shall be paid in item 29)								
	2	With float glass pane of 3 mm thickness								
		W1	25	1.50		1.50	48.75			
		W2	4	1.00		1.70	6.80			
		W/E	4	1.50		0.90	5.40			
		V	19	0.90		0.60	10.26			
							71.21	sqm	708.00	50416.68
32	12.7	Providing and fixing cement plaster wall floor conforming to IS 15023 of approved make, corners, shades and size etc wall and floor over 12 mm thick bed of cement Mortar 1:2 (1 cement : 2 coarse sand) and pointing with grey cement flake @ 3.5kg per sqm including pointing in white cement mixed with matching pigment complete.								

SN	QTY	DESCRIPTION	NO	L	W	HT	OFF	UNIT	RATE	AMOUNT
	1	See QTY REQUIRED								
		various sizes	10	8.25		2.40	146.75			
			4	3.50		2.40	37.44			
			4	3.10		2.40	28.78			
			2	1.80		2.40	8.64			
			4	1.20		2.40	18.36			
			2	8.00		2.40	24.00			
		various sizes	1	8.80		2.40	18.32			
			1	7.20		2.40	17.28			
		addition (round)	1	7.40		0.60	4.44			
		various sizes	1	8.70		0.60	3.42			
		total 174	8	0.00		2.10	-6.48			
		174	14	1.20		2.10	-36.28			
							281.60	sqm	867.00	152612.00
33	12.8	Finishing and laying concrete slabs base slab conforming to IS - 15022 of approved size, make, color, state laid on 20 mm thick cement mortar 1:4 (1 cement : 4 coarse sand) including grinding the joints with white cement sand with matching pigments etc. complete.								
	12.8.1	See above 300x300mm								
		total	12	1.50	1.50		18.00			
			2	3.50	1.50		14.54			
			2	3.10	8.00		21.00			
		various sizes	1	2.20	1.20		2.64			
			1	2.40	1.20		2.88			
							70.06	sqm	720.00	51221.68
34	12.79	Finishing and laying double channel metal clamps (maximum 20mm thick layer) worked base slab with some absorption less than 0.5% and conforming to IS - 15022-2017 of approved make of all colors and shades and are mentioned below (1- 10mm, laid on 20mm thick cement mortar 1:4 (1 cement : 4 coarse sand) including grinding the joints with white cement and matching pigments etc. complete.								
	12.79.1	See above 40mm thickness 8 to 10mm								
		left hand wing corner	10	7.00	8.00		360.00			
		back wing corner	2	7.00	8.00		128.00			
		cut corner - corner	2	3.50	8.00		56.00			
		front wing end corner	2	3.20	3.00		23.76			
		average	1	6.10	1.20		7.32			
		section	1	3.20	2.40		7.84			
		slab	1	1.20	2.40		2.88			
		top	1	3.00	6.00		18.00			
		vertical	1	3.00	1.80		4.80			
		horizontal	1	3.00	3.20		10.56			
		slab	1	8.00	7.80		38.00			
		vertical	1	3.50	8.00		18.00			
		slab & wall	2	1.70	2.40		8.16			
		slab	0.2	854.28			130.88			
							780.27	sqm	1082.00	848659.00
35	12.45	15 mm thick yellow rubber polished Granite stone slab (working laid over 20mm (Average) thick layer of cement mortar 1:4 (1 cement : 4 coarse sand) laid and polished with gray cement slurry including rubbing and polishing etc. complete (Area of slab should be 0.50 sqm and above)								
	12.45.1	Granite stone (polished)								
		back right wing corner	2	31.20	1.80		112.68			

SN	QTY	DESCRIPTION	NO	L	W	HD	QTY	UNIT	RATE	AMOUNT
		tile cornice	2	2.10	0.20		21.84			
		skirting and nosing	2	1.80	0.20		71.92			
		vertical bars	1	7.80	0.20		48.50			
							200.54	sqm	1700.00	480948.24
36	12.46	11 mm Thick Table top(s) polished Granite stone slab in form and finish of deep slating slabs and pillars laid on stone (basalt) block base of cement mortar 1:3 (1 cement : 3 cement sand) and jointed with grey cement slurry including cutting and polishing etc. complete (single stone is to be used for more and finish of slabs and width of stone for slating and slabs shall be equal to the height of slating & slabs and length of 7.0 m)								
	12.46.1	Granite stone prepark								
		slabs	24	1.40	0.50		10.08			
		bedding	1	3.00	1.50		4.50			
							14.58	sqm	1800.00	27255.00
37	12.8	10mm Thick Granite work (machines cut, table topped & more polished for kitchen platform, vanity counters, window sills and stone facades of required size laid over 20mm thick base cement mortar 1:4 (1 cement : 4 cement sand) including joints treated with white cement grout with matching pigment including cutting and polishing to edge including to give high glass finish.								
	12.8.1	Granite stone prepark								
		kitchen platform	1	3.60	0.80		3.16			
			1	3.20	0.80		1.92			
		kitchen platform, window	1	3.30	0.80		1.08			
			1	1.80	0.80		1.08			
		window frame	2	3.10	0.60		3.72			
							10.86	sqm	2400.00	26088.00
38	12.17	Providing and fixing 10mm thick granite (machines cut, table topped & more polished on both sides) for platform surface in toilet or similar location of required size or wall with cement mortar 1:4 (1 cement : 4 cement sand) including cutting stone in wall and joint with wall treated with white cement grout with matching pigment including cutting and polishing to edge including to give high glass finish.								
	12.17.1	Granite stone prepark								
		wall partition	4	0.85		1.20	3.12	sqm	2111.00	6586.32
39	12.18	Lab for providing edge including to 10mm thick stone counters, vanities, etc. including machine polishing to edge to give high glass finish etc. complete as per design approved by Engineer in Charge								
	12.18.2	Granite work								
		kitchen platform	1	3.80			3.60			
			1	3.20			3.20			
		kitchen platform, window	1	3.30			3.30			
			1	1.80			1.80			
		wall partition	2	3.00			6.00			
		slabs	24	1.50			36.00			
		window frame	2	3.10			6.20			
							60.10	metre	172.00	10337.20

SN	REF	DESCRIPTION	NO	L	R	NO	QTY	UNIT	RATE	AMOUNT
43	11.2	Providing and making 12mm thick cement plaster of rise								
	4	In Cement Mortar 1:2 (1 cement : 2 fine sand)								
		left + right wing rooms	12	7.00		3.60	202.40			
		total	20	8.00		3.60	260.00			
		total	2	7.00		3.60	50.40			
			4	6.00		3.60	72.00			
		partition walls	4	3.60		2.40	36.48			
			8	1.20		2.40	28.80			
		total corridor	2	2.10		3.60	15.12			
			2	6.20		3.60	37.44			
		back wing rooms	3	6.00		3.60	64.80			
			4	7.00		3.60	100.80			
		back corridor	1	27.10		3.60	97.56			
		front wing, bed	4	3.30		3.60	47.52			
			2	3.60		3.60	25.92			
		ms, kitchen	4	3.30		3.60	47.52			
			2	2.40		3.60	17.28			
		total	2	1.20		3.60	6.64			
		store	2	1.20		3.60	6.64			
			1	2.40		3.60	6.64			
		total	2	1.20		3.60	6.64			
			1	2.40		3.60	6.64			
		hall	2	3.60		3.60	21.60			
			1	6.00		3.60	21.60			
		entrance	1	1.60		3.60	5.76			
		entrance	1	7.50		3.60	27.00			
			2	6.20		3.60	44.64			
			2	1.60		3.60	11.52			
		staircase	1	4.00		3.60	14.40			
		staircase	2	3.00		3.60	21.60			
			1	3.30		3.60	12.06			
		dining	2	6.00		3.60	36.00			
			1	7.60		3.60	27.36			
		kitchen	2	3.60		3.60	25.92			
			1	6.00		3.60	18.00			
		store, wash	2	1.70		3.60	12.24			
			2	2.40		3.60	17.28			
		staircase tower	2	3.00		2.40	15.60			
			2	1.60		2.40	9.60			
							1713.58	sqm	61.50	158762.57
44	11.3	Providing and making 15mm thick cement plaster on the rough side of single or half brick wall of rise								
	4	In Cement Mortar 1:3 (1 cement : 3 fine sand)								
		left + right wing rooms	8	7.00		3.60	201.60			
		total	2	7.00		3.60	50.40			
		total partition	12	1.20		2.40	34.56			
			12	1.50		2.40	43.20			
		corridor	2	21.10		3.60	223.92			
		back wing, room	2	6.00		3.60	64.80			
			2	7.00		3.60	36.40			
		front corridor	2	12.20		3.60	87.84			
		back wing, bed	2	1.60		3.60	25.92			
		ms, kitchen, store	2	2.40		3.60	28.92			
		total	1	2.20		3.60	7.92			
		passage	2	6.10		3.60	43.92			
		hall	1	6.00		3.60	21.60			
		entrance	1	1.50		3.60	5.76			
		entrance	1	7.50		3.60	27.00			
		staircase	1	3.00		3.60	10.80			

SN	REF	DESCRIPTION	NO	L	W	HD	QTY	UNIT	RATE	AMOUNT
			1	6.00		3.00	18.00			
		reference	1	3.30		3.00	12.00			
		lining	1	7.60		3.00	27.36			
		vertical	1	6.00		3.00	18.00			
		work, work	2	1.70		3.00	12.34			
			2	2.40		3.00	17.28			
		deductions D1	1	2.00		3.00	-6.00			
		D2	5	1.20		2.10	-15.60			
		D3	14	1.00		2.10	-29.40			
		D4	5	0.90		2.10	-9.45			
		D5	14	0.75		2.10	-29.34			
		W1	21	1.30		1.30	-40.35			
		V2	4	1.00		1.70	-6.80			
		W3	4	1.50		0.90	-5.40			
		V	19	0.90		0.60	-9.72			
							888.13	sqm	107.00	95026.81
45	11.8	Plastering and making 10mm thick cement plaster in two coats with under layer of 10mm thick plaster 1:5 (1 cement : 5 fine sand) and top layer of 10mm thick with cement plaster 1:3 (1 cement : 3 fine sand) finished rough with sponge								
		under base, building	1	210.00		3.50	1155.00			
		external base	2	8.00		3.80	41.58			
			2	3.40		2.80	17.44			
		external base	1	1.00		2.10	-2.10			
		over base of parapet	1	280.00		0.90	252.00			
							1484.12	sqm	187.00	244218.08
46	12.3	Cement concrete flooring with cement concrete 1:2:4 (1 cement : 2 : 4 parts sand : 4 graded stone aggregate 20mm) finished with a finishing coat of neat cement.								
	12.3.2	10 mm thick								
		floor area					1188.08	sqm	254.00	300994.00
47	14.12	Providing and applying 2mm thick ready mix exterior grade approved mastic putty (the same will come, Atlas Superfine W81 of PCL), Arcon, IC, Harsco, J.K. and putty on walls to make the surface smooth and even.								
		5 mm plaster					346.64			
		12 mm plaster					1713.58			
		15 mm plaster					830.12			
		10 mm plaster					1454.15			
						TOTAL:	1052.53	sqm	94.50	877494.00
48	14.12	Applying one coat of cement primer on wall surface supplied @ 0.00 litre/10 sqm/complete					3080.53	sqm	23.00	116094.00
49	14.11	Wall painting with acrylic, heavy emulsion (photo) paint of required shade to give an even shade								
	14.11.1	On new work (two or more coats)								
		5, 12 & 15 mm plaster					3080.53	sqm	52.50	160704.00
50	14.16	Painting exterior surface with PREMIUM ACRYLIC SMOOTH exterior paint of required shade as per manufacturer's specifications to give protective and decorative finish reducing cleaning workload of surface etc. complete with								
	14.16.1	On new work (two or more coats) applied @ 1.43 lit/ 10 sqm over and including priming coat of exterior primer applied @ 2.20 lit/ 10 sqm)								

DETAILED ESTIMATE FOR 50 BED ASHRAM BHAVAN

FOR TRIBAL DEVELOPMENT DEPARTMENT

AS PER PWD BUILDING SOR, W.A.T. 01.01.2015

SANITARY AND WATER SUPPLY

NO.	QTY	DESCRIPTION	NO.	L	W	H	QTY	UNIT	RATE	AMOUNT
1	18.2	Providing and fixing vitreous china water closet (sitting pan) (flush) type including cutting and making good the walls and floors wherever required.								
	18.2.1	White vitreous china W.C. pan of size 100x140 mm	6				6.00	each	1440.00	8640.00
2	18.4	Providing and fixing vitreous china wash closet (sitting pan) W.C. pan with white tile marked plastic seat and to fix the low level white P.V.C. flushing system (bowl) complete, conforming to IS - 1275, with all fittings and fixtures complete including cutting and making good the walls and floors wherever required.								
	18.4.1	White coloured tile	2				2.00	each	2882.00	5764.00
3	18.8	Providing and fixing vitreous china toilet (not built) complete including flush the bowl system with all fittings complete.								
	18.8.1	White	6				6.00	each	1334.00	8004.00
4	18.9	Providing and fixing tile marked plastic seat with tile marked low W.C. pan complete.								
	18.9.1	White black	2				2.00	each	628.00	1256.00
5	18.12	Providing and fixing white vitreous china (sitting pan) with waste fitting as per IS - 2004, and other fittings as C.P. pan complete.								
	18.12.1	White vitreous china of size 400x500/500mm	3				3.00	each	1776.00	14208.00
6	18.17	Providing and fixing vitreous china wash basin with C.I. brackets, 32 mm C.P. brass waste of standard pattern, including painting of brackets, cutting and making good the walls wherever required.								
	18.17.1	White size 300x400 mm	15				15.00	each	1430.00	21450.00
7	18.21	Providing and fixing stainless steel A ISI 204 (160) kitchen sink with drain board as per IS (150) with C.I. brackets and stainless steel plug 40 mm including painting of fittings and brackets, cutting and making good the walls wherever required.								
	18.21.1	160x112 mm bowl size 300x110x241 mm	2				2.00	each	11767.00	23534.00
8	18.25	Providing and fixing flexible P.V.C. waste pipe for sink or wash basin including P.V.C. waste fittings complete.								
	18.25.2	40 mm dia	2				2.00	each	88.50	177.00
9	18.29	Providing and fixing 300x400 mm framed edge door cover of superior glass (of approved quality) complete with 6 mm thick fixed board ground fixed to wooden ribs with C.I. brass screws and washers complete.								
			15				15.00	each	595.00	8925.00
10	18.32	Providing and fixing M.S. flange hot stamps of approved design for (Sewer Cast iron) iron (port) pipe embedded in and including cement concrete blocks 150x150x150 of 1:2:4 mix (1 course - 2 course - 3rd - 4 graded stone aggregate 20mm nominal size including cost of cutting holes and making good the walls etc.								
	18.32.1	For 150 mm dia pipe	30				30.00	each	88.50	2655.00
	18.32.2	For 75 mm dia pipe	30				30.00	each	83.00	2490.00

SN	REF	DESCRIPTION	NO	L	W	H	QTY	UNIT	RATE	AMOUNT
11	18.34	Providing and fixing sand cast iron S&S lined with asbestos class of internal diameter as per IS : 1225, standard rubber washer 3 mm thick, bolts and nuts								
	18.34.1	150 mm dia	40				40.00	each	418.00	16720.00
	18.34.2	75 mm dia	30				30.00	each	278.00	8340.00
12	18.34	Providing and fixing cast iron pipe to sand cast iron centrifugally cast (smooth iron pipe and fittings of diameter								
	18.34.1	150 mm	8				8.00	each	228.00	1824.00
13	18.76	Providing and fixing on well face or inside floor UV stabilized Unreinforced Rigid PVC pipe large diameter having 3.2mm wall thickness conforming to IS : 1502 (rigid pipe) including material cost, joining with solvent cement conforming to IS : 582 having 10 mm gap for thermal expansion								
	18.76.2	150 mm dia pipe	1	222.00			222.00	metre	267.00	59274.00
14	18.77	Providing and fixing on well face UV stabilized Unreinforced - PVC moulded string/ accessories having 3.2mm wall thickness for Rigid PVC pipe conforming to IS : 1502 (heavy) joining with solvent cement conforming to IS : 582 having 10 mm gap for thermal expansion								
	18.77.1	Tap/ Tee with cross third 45° bend 10"								
	18.77.1.2	110 mm	16				16.00	each	154.00	2464.00
	18.77.3	P Tee 110mm dia 110mm long	15				15.00	each	227.00	3405.00
	18.77.4	Header tap 110x75mm	16				16.00	each	90.50	1448.00
	18.77.7	Man floor tap 110	15				15.00	each	121.00	1815.00
15	18.7	Providing and fixing on well surface GI pipe medium class complete with GI fittings and clamps, including cutting, making good the wells etc. and testing of joints complete								
	18.7.1	15 mm dia. nominal bore	1	33.00			33.00	metre	148.00	4884.00
	18.7.2	20 mm dia. nominal bore	1	18.00			18.00	metre	138.00	2484.00
	18.7.3	25 mm dia. nominal bore	1	18.00			18.00	metre	208.00	3744.00
	18.7.4	32 mm dia. nominal bore	1	58.00			58.00	metre	318.00	18456.00
	18.7.5	40 mm dia. nominal bore	1	22.00			22.00	metre	354.00	7788.00
	18.7.6	50 mm dia. nominal bore	1	43.00			43.00	metre	471.00	20273.00
16	18.14	Providing and fixing 15 mm nominal size C.P. brass fittings of approved make and conforming to IS 9001 including C.P. brass extension if required								
	18.14.1	Bit cock (500 grams)	30				30.00	each	382.00	11460.00
	18.14.2	Long body bit cock (500 grams)	8				8.00	each	426.00	3408.00
	18.14.3	Two way bit cock (500 grams)	8				8.00	each	738.00	5904.00
	18.14.4	Stop cock (unsalted) (500 grams)	8				8.00	each	484.00	3872.00
	18.14.7	Angle valve for basin mixer and toilet parts (500 grams)	12				12.00	each	382.00	4584.00
	18.14.8	Basin mixer pillar tap with gear (1000 grams)	15				15.00	each	1348.00	20220.00
	18.14.13	Toilet paper holder	8				8.00	each	248.00	1984.00
	18.14.14	Shower door (plate)	20				20.00	each	163.00	3260.00
	18.14.15	Shower robe (hooking type) (1500mm)	8				8.00	each	268.00	2144.00
	18.14.16	Toilet roll (400mm long x 20mm dia)	20				20.00	each	338.00	6760.00
	18.14.18	Wall mirror (triangular type) with match arrangement for hand mirror (1400gms)	15				15.00	each	1764.00	26460.00
17	18.15	Providing and fixing stainless steel drain job of approved make/quality	18				18.00	each	61.00	1100.00
18	18.18	Providing and fixing gun metal non return valve horizontal type of approved quality (approved only)								

SN	REF	DESCRIPTION	NO	L	W	H	QTY	UNIT	RATE	AMOUNT
	18.18.3	40 mm nominal bars	3				6.00	each	688.00	4128.00
	18.18.4	50 mm nominal bars	4				4.00	each	950.00	3800.00
19	19.31	Providing and placing in position C.I. manholes complete category 'A' (Main Pipeline Sys. Ltd., Indian Valve Co. (PVT), Fluents Engineers Pvt. Ltd., W&M) with top complete								
	19.31.1	100 mm diameter	6				8.00	each	3403.00	27224.00
20	19.42	Providing and placing in position (at all flow levels) polyethylene water storage tank (H : 1275) marked with cover and outside locking arrangements and making necessary holes for inlet, outlet and overflow pipes but without fittings and the frame support for tank	1	5000.00			5000.00	lbrs	7.50	36500.00
21	19.47	Constructing masonry Chamber 2000x2000 mm, inside with modular wet burn clay bricks of 35 kg and in cement mortar 1:4 (1 cement : 4 coarse sand) for stop rock, with C.I. surface box 100x100 x75 mm (inside) with forged cover fixed in cement concrete slab 12x4 mm (1 cement : 2 coarse sand : 4 graded stone aggregate 20 mm nominal size) necessary excavation foundation concrete 1:2:10 (1 cement : 5 fine sand : 10 graded stone aggregate 40mm nominal size) and inside plastering with cement mortar 1:2 (1 cement : 3 coarse sand) 12 mm thick finished with a finishing coat of red cement complete as per standard design	12				12.00	each	754.00	9048.00
22	19.48	Constructing masonry Chamber 600x600 mm, inside with modular wet burn clay bricks of 35 kg and in cement mortar 1:4 (1 cement : 4 coarse sand) for man valve, with C.I. surface box 100mm dia diameter, 100 mm bottom diameter and 100 mm deep (inside) with channel fit and RCC top slab 12x4 mm (1 cement : 3 coarse sand : 4 graded stone aggregate 20mm nominal size) necessary excavation foundation concrete 1:2:10 (1 cement : 5 fine sand : 10 graded stone aggregate 40 mm nominal size) and inside plastering with cement mortar 1:2 (1 cement : 3 coarse sand) 12 mm thick finished with a finishing coat of red cement complete as per standard design	14				14.00	each	4644.00	65016.00
23	20.2	Providing and laying cement concrete 1:2:10 (1 cement : 5 coarse sand : 10 graded stone aggregate 40mm nominal size) all round S.W. pipes including bed concrete 150mm thick as per standard design								
	20.2.1	100 mm diameter S.W. pipe	1	120.00			100.00	metre	438.00	43800.00
24	20.3	Providing and laying water-tight S.W. gully trap grade 'A' complete with C.I. grating brick masonry chamber with wet burn modular clay bricks, crushing strength not less than 20kg/cm ² , water tight C.I. cover with frame of 300 x300 mm size (inside) the weight of cover to be not less than 4.50 kg and frame to be not less than 2.70 kg as per standard design								
	20.3.1	300x100 mm size P type	18				18.00	each	1339.00	24102.00

SN	REF	DESCRIPTION	NO	L	W	H	QTY	UNIT	RATE	AMOUNT
25	20.7	Constructing brick masonry boundary with wall base module clay bricks (finishing strength not less than 30kg/cm ² in cement mortar 1:4 (1 cement : 4 coarse sand), 100.0 kg slab with 1:2.4 mix (1 cement : 2 coarse sand : 4 graded stone aggregate 20 mm nominal size), finish with cement concrete 1:4:8 mix (1 cement : 4 coarse sand : 8 graded stone aggregate 20mm nominal size) inside plastering 12mm thick with cement mortar 1:3 (1 cement : 3 coarse sand) finished with floating coat of neat cement and making channels in cement concrete 1:2.4 (1 cement : 2 coarse sand : 4 graded stone aggregate 20mm nominal size) finished with a floating coat of neat cement concrete as per standard design.								
	20.7.1	Each size (HxW) cm (mm) 45 cm (mm) 45 cm (mm) including 1:1 ratio with base (HxW) 45x45 cm (mm) internal dimensions total weight of cover and base to be not less than 30 kg (weight of cover 25 kg and weight of base 15 kg)	14				14.00	each	6703.00	93842.00
26	20.31	Forming and constructing wall of 1.20x1.20x1.20m thick with base including 1:1 ratio with base 100 mm diameter and 1.20 m long complete as per standard design	3				3.00	each	1700.00	5127.00
Total as per BOM									Rs.	855006.50
SAY									Rs.	655000.00


 Assistant Engineer
 Tribul Dohop
 Raigarh (C.G.)

DIETIE TANG

Scanned with OKEN Scanner

DETAILED ESTIMATE FOR 50 BED ASHRAM BHAYAN									
FOR TRIBAL DEVELOPMENT DEPARTMENT									
AS PER PWD BUILDING SOR, W.A.T. 01.01.2015									
BORE WELL									
Sl.	REF	DESCRIPTION	NO	L	W	H/D	QTY	UNIT	AMOUNT
1	21.1	Drilling/ boring bore well perfectly vertical for the specified depth suitable to receive required dia for casing/ slotted pipe, by suitable method prescribed in IS- 2000 (part II), including collecting samples from different strata, preparing and submitting strata charters log, including fees & charges of all equipments, tools, plants & machines required for the job, all complete as per direction of Engineer-in-charge upto 30 metre depth below ground level.							
	21.1.1	All types of soil							
	21.1.1.1	100 mm dia	1	30.00			30.00	metre	333.00
	21.1.2	Slotted pipe including flanges							
	21.1.2.1	100 mm dia	1	80.00			80.00	metre	595.00
2	21.2	Drilling/ boring bore well perfectly vertical for the specified depth suitable to receive required dia for casing/ slotted pipe, by suitable method prescribed in IS- 2000 (part II), including collecting samples from different strata, preparing and submitting strata charters log, including fees & charges of all equipments, tools, plants & machines required for the job, all complete as per direction of Engineer-in-charge beyond 30 metre & upto 150 metre depth below ground level.							
	21.2.1	All types of soil							
	21.2.1.1	100 mm dia	1	30.00			30.00	metre	371.50
	21.2.2	Slotted pipe including flanges							
	21.2.2.1	100 mm dia	1	35.00			35.00	metre	434.50
3	21.4	Casing/ assembling, lowering and fixing in vertical position in bore well, unperforated PVC medium well casing (1000) slotted pipe with ribs, conforming to IS- 12010, including fees & labour charges, fittings & accessories etc. all complete, for all depths, as per direction of Engineer-in-charge.							
	21.4.1	100 mm nominal size dia	1	30.00			30.00	metre	548.00
4	21.11	Flashing and fixing suitable size threaded metal tube cap or spot welded plate to the top of bore well housing/ casing pipe, reasonable as per requirement, all complete for bore well of:							
	21.11.1	100 mm dia	1				1.00	each	217.00
5	21.12	Flashing and fixing M 3/4" clamp of required dia to the top of casing/ housing pipe of bore well as per IS- 2000 (part II), including necessary bolts & nuts of required size complete.							
	21.12.1	100 mm clamp	1				1.00	each	1055.00
6	21.17	Carrying out the resistivity survey by VES method using Schlumberger configuration for locating the proper spot for siting of tube well within the selected habitation, including photographic interpretation of resistivity data and submission of report in the desired format along with resistivity readings, necessary graph and photographs. (only approximate price is payable)	1				1.00	point	1500.00
Total as per SOR								Rs.	71208.00
SAY								Rs.	71000.00

DETAILED ESTIMATE FOR 50 BED ASHRAM DHAYAN

FOR TRISAL DEVELOPMENT DEPARTMENT

AS PER PWD BUILDING SOR, v. 4.1, 01.01.2013

SUBMERSIBLE PUMP

Sl. No.	Item	Description	NO	L	W	H	UNIT	UNIT	RATE	AMOUNT
1	26.3	Supplying, installation, testing and commissioning of submersible pump set for water supply system with submersible motor drive coupled to multi stage submersible pump of specified discharge capacity head, delivery size 10" setting base well including 2 sets of outside size tubing clamps made out of 30 mm X 9 mm MS flat, connection with outside submersible cable of standard length etc. as required.								
	26.3.1	3.7 HP, three phase	1				1.00	Each	33000.00	33000.00
2	26.4	Supplying and laying of following size 10" class G.I pipe with welded steel flange of outside size at both the end of every pipe length, being with submersible pump and bearing with the pump in the base well including necessary rubber gasket, nuts & bolts etc. as required.								
	26.4.1	10 mm dia	1	110.00			110.00	Metre	360.00	40030.00
3	26.11	Supply, installation, testing and commissioning of 1.5 HP 1 phase submersible motor starter with control with floor mounted type made out of not less than 10 mm thick MS sheet and comprising of following panel including switchgear, there in including connection wire connection etc. as required.								
		(a) Phase indicating lamps with fuses and toggle switches 1 set								
		(b) 1.5 HP 1 phase DOL starter with fuse head and no vol. relay 1 No								
		(c) 32 A 1/2" cable IPBMS 1 No								
		(d) Voltmeter 0-250V 1 set								
		(e) Ammeter 0-10 A 1 set	1				1.00	Each	4125.00	4125.00
4	26.12	Supplying and laying M.S. clamp 50 mm long made of 10mm diam thick M.S. Flat for holding the pipes and submersible pump set as required.	1				1.00	metre	314.00	314.00
5	26.13	Supplying and laying 300 mm dia 7 mm thick M.S. sheet cover with 3 mm edge to be put on tube well from pipe as required.	1				1.00	each	283.00	283.00
6	26.14	Supplying, laying and burying following size submersible cable along with GALVANIZED pipe line of bed in ground etc. as required.								
	26.14.1	3 core 10 sqmm	1	140.00			140.00	Metre	98.00	13880.00
Total Amount as per SOR										83081.00
BAY Rs.										83080.00

Approved Engineer
Tribal Development
Department (C.G.)
11/1

DETAILED ESTIMATE FOR 50 BED ASHRAM BHAVAN

FOR TRIBAL DEVELOPMENT DEPARTMENT

AS PER PWD BUILDING SOR, W.B.I. 01.01.2015

SUMP WELL

Sl. No.	Item	Description	NO	L	W	H/D	QTY	UNIT	RATE	AMOUNT
1	1.1	Excavation for all types and sizes of foundations, trenches and drains or for any other purpose including disposal of excavated stuff upto 1.5 m lift and haul upto 50m (at least 50m away from the excavated area), including dressing and leveling of pit.								
	1	In all types of soil.	1	3.40	2.40	2.10	27.30	cum	185.00	5034.95
2	1.2	Cum for every additional lift of 1.5 m or part thereof								
	1	All types of soil.	1	3.40	2.40	0.60	7.78	cum	34.50	268.68
3	3.1	Providing and laying nominal mix plain cement concrete with crushed stone aggregate using concrete mixer in all works upto grade level including cost of form work.								
	2	1:1.5:3 (1 cement : 1.5 coarse sand : 3 graded stone aggregate 20mm nominal size)	1	3.40	2.40	0.20	2.58	cum	2553.00	6582.13
4	3.2	Providing and laying nominal mix reinforced cement concrete with crushed stone aggregate using concrete mixer in all works upto grade level including cost of form work.								
	1	1:1.5:3 (1 cement : 1.5 coarse sand : 3 graded stone aggregate 20mm nominal size)	1	3.40	2.40	0.16	2.07	cum	4163.00	8632.40
5	5.12	Providing and placing in position reinforcement for R.C.C. work including straightening, cutting, bending, lacing etc. complete in per drawings including cost of bending wire in foundation and depth as complete.								
	1	Thermo-Mechanically treated bars (TC 415) Steel @ 110 Kg	1	110.00	0.18	CLRM 17.60	kg	54.30		939.28
6	6.1	Providing and laying form work including cutting, chaffing, shoring, sloping, propping bracing etc. complete and including its removal at all levels. 4m ²								
	7	Suspended floor, with access platform, formwork (plain surface) and chaffers (cast in situ)	1	3.40	2.40		12.96	sqm	235.00	3045.60
7	7.5	Brick work with modular bricks lime beds (F&G bricks) conforming to IS:12004-2002 of class designation A.D in foundation and plinth in.								
	4	Cement Mortar 1:6 (1 cement : 6 coarse sand)	2	3.40	0.30	2.00	4.32			
			2	3.40	0.20	2.00	1.82			
						TOTAL	6.24	cum	3263.00	20381.12
8	11.3	Providing and making 15mm thick cement plaster on the rough side of single or half brick wall of m/s.								
	11.3.4	In Cement Mortar 1:6 (1 cement : 6 fine sand)								
			2	3.40		2.00	21.60			
			2	3.40		2.00	9.60			
			2	3.20	2.40		34.56			
						TOTAL	35.76	sqm	107.00	8088.12
9	12.7	Providing and laying cement plaster with mesh conforming to IS:14622 of approved make, colours, shades and size in wall and dado over 12 mm thick bed of Cement Mortar 1:3 (1 cement : 3 coarse sand) and pointing with grey cement slum @ 3.7kg per sqm including pointing in white cement mixed with matching pigment complete.								
	12.7.1	Form rate 200x300mm.	2	3.40		2.00	21.60			
			2	3.40		2.00	9.60			

DETAILED ESTIMATE FOR 50 BED ASHRAM BHAVAN

FOR TRIBAL DEVELOPMENT DEPARTMENT

AS PER PWD BUILDING SQR, w.e.f. 01.01.2015

RAIN WATER HARVESTING

SN	REF	DESCRIPTION	NO	L	W	H/D	QTY	UNIT	RATE	AMOUNT
1	1.1	Excavation for all types and sizes of foundations, basements and drains or for any other purpose including disposal of excavated stuff upto 1.5 m to 10 and less upto 10m (at least 5m away from the excavated area), including dressing and leveling of pits								
	1	In all types of soils	1	2.00	2.00	2.50	15.83	cum	165.00	2610.63
2	1.2	Extra rate for quantity of work executed in it under bad condition	1	2.50	2.50	1.00	8.25	cum	44.00	375.00
3	21.1	Ground packing in tube well construction in accordance with IS: 4097, including providing graded fine material course, as required grading & size as per actual requirement, all complete as per direction of Engineer-in-charge.								
		brick bed	1	2.00	2.00	0.00	4.06			
		coarse sand	1	2.00	2.00	0.00	3.13			
		fine sand	1	2.00	2.00	0.00	1.88			
							10.24	cum	1048.00	11482.50
4	21.2	Investigating bore well perfectly vertical for the specified depth suitable to receive required dia for casing/stemmer pipe, by suitable method prescribed in IS: 2097 (part II), including collecting samples from different strata, preparing and submitting strata chart/diary log, including fee & running charges of all equipments, tools, plants & machines required for the job, all complete as per direction of Engineer-in-charge beyond 10 metre & upto 150 metre depth below ground level								
	21.2.1	All types of soil								
	21.2.1.1	150 mm dia, more 150/10	3	1.00			8.00	metre	371.00	3328.00
5	21.4	Supplying, ascending, lowering and fixing in vertical position in bore well, reinforced PVC stemmer well screen (HAWK) drilled pipes with ribs, conforming to IS: 12018, including fee & labour charges, fittings & accessories etc. all complete, for all depths, as per direction of Engineer-in-charge								
	21.4.1	150 mm nominal size dia	1	2.00			1.50	metre	548.00	1811.00
6	21.18	Providing and fixing filter of minimum 100 litre capacity for roof top rain water harvesting through tube well consisting of two layered HDPE tank with five layers (each layer of minimum 100 mm) consist of coarse sand, 4mm, 8mm, 16mm & 32 mm gravels with constant steel wire mesh fixed between each layer with suitable length and sufficient numbers of 150 mm dia PVC pipe pieces in the bottom of tank to support the above layer including fixing of inlet and outlet P.V.C. pipe of required diameter upto 2 metre length in each side, Cement Concrete platform of required size complete as directed by Engineer in charge, (excluding cost of borewell and inlet and outlet pipe beyond 2 metre)	1	200.00			200.00	litre	18.50	3700.00
7	21.18	Providing and fixing 80-100 mm dia PVC ball valve for stop outlet of rain water harvesting pipe and filter	2				2.00	each	644.00	1288.00

DETAILED ESTIMATE FOR 50 BED ASHRAM BHAVAN

FOR TRIBAL DEVELOPMENT DEPARTMENT

AS PER PWD BUILDING SOR, w.e.f. 01.01.2015

CHAUKIDAR QUARTER

SN	QSP	DESCRIPTION	NO	L	W	HD	QTY	UNIT	RATE	AMOUNT
1	1.1	Excavation for all types and sizes of foundation, trenches and drains or for any other purpose including disposal of excavated stuff upto 1.5 m depth and load upto 50m (at least 5m away from the excavated area), including dressing and leveling of site, in all types of soil.								
		volume	8	1.20	1.20	1.20	13.82			
			2	0.30	0.25	0.50	0.93			
			4	3.30	0.25	0.50	0.68			
			1	1.80	0.25	0.50	0.09			
							15.40	cum	165.00	2540.74
2	1.17	Filling from available excavated stuff (excluding extra in trenches, plots, sides of foundation etc.) in layers not exceeding 20cm in depth consolidating each deposited layer by ramming and watering with a load upto 50 M and 80 upto 1.5 M								
							15.40	cum	65.00	1001.20
3	1.18	Providing and laying in place with sand Choker drain and back concrete under floor in layers not exceeding 20cm in depth consolidating each deposited layer by ramming and watering, including dressing etc. complete.								
		width	1	3.30	2.10	0.90	6.24			
		bed room	1	3.30	3.60	0.90	10.89			
		bed	1	2.25	1.80	0.90	3.96			
		bed	1	0.90	1.00	0.90	1.17			
							21.56	cum	371.00	8050.64
4	1.1	Providing and laying nominal mix plain concrete with crushed stone aggregate using concrete mixer in all works upto plinth level excluding cost of form work.								
		1:1.5 (1 cement : 3 coarse sand : 5 graded stone aggregate 40mm nominal size)								
		volume	8	1.20	1.20	0.20	3.20			
			2	0.30	0.25	0.10	0.43			
			4	3.30	0.25	0.10	0.33			
			1	1.80	0.25	0.10	0.09			
		flooring, room	1	3.30	2.10	0.10	0.69			
		bed room	1	3.30	3.60	0.10	1.19			
		width	1	2.25	1.00	0.10	0.40			
		bed & bed room	1	0.90	1.00	0.10	0.10			
							8.53	cum	2870.00	16432.61
5	1.2	Providing and laying nominal mix reinforced cement concrete with crushed stone aggregate using concrete mixer in all works upto plinth level excluding cost of form work.								
		1:1.5:3 (1 cement : 1.5 coarse sand : 3 graded stone aggregate 20mm nominal size)								
		(1) 8	1.80	1.00	0.15	1.20				
		Reinforcement: F1, A1 = (1.1 x 1.1 = 1.21), A2 = (0.36 x 0.36 = 0.12), A3 = (1.1 x 0.36) = 0.3972 = 0.51, 1/4(A1 + A2 + 4A3) = 1.01								
		8	1.38		0.36	3.31				
		Column in plinth: C1	8	0.20	0.20	1.10	0.56			
		plinth beam	3	4.50	0.20	0.25	0.63			
			4	3.30	0.20	0.25	0.66			

SN	REF	DESCRIPTION	NO	L	W	NO	QTY	UNIT	RATE	AMOUNT
			1	1.80	0.20		0.36			
			2	1.80	0.20		0.72			
		lime	1	30.20	0.60		18.12			
		lime	1	1.50	0.60		0.90			
		lime	1	1.50	0.60		0.90			
		lime	1	1.50	0.60		0.90			
		lime	1	0.75	0.60		0.45			
		lime	2	8.30	0.20		1.66			
			2	8.30	0.30		4.98			
			4	3.30	0.20		2.64			
			4	3.30	0.30		3.96			
			1	1.80	0.20		0.36			
			2	1.80	0.30		1.08			
			4	8.20	0.40		5.12			
							55.73	sqm	303.00	11237.40
8	7.5	brick work with modular flyash lime bricks (F.L.D. bricks) conforming to IS 1054-2002 of class designation F 5 in foundation and plinth in Cement Mortar 1:6 (1 cement : 6 coarse sand)								
	4									
		in plinth	2	8.00	0.20	0.30	2.88			
			2	8.30	0.20	0.30	1.19			
						A =	4.07			
		in superstructure	2	8.00	0.20	2.80	8.96			
			4	3.30	0.20	2.80	7.39			
			1	1.80	0.20	2.80	1.01			
		external	3	1.00	0.20	2.19	-1.26			
		of	1	0.75	0.20	2.19	-0.33			
		internal	3	1.30	0.20	1.21	-4.87			
			1	8.80	0.20	0.80	-0.11			
						B =	14.81			
						A+B =	18.87	cum	3083.00	61585.21
10	7.8	Extra for brick work in superstructure above plinth level for every floor or part thereof in addition to rate for foundation and plinth	1	14.81			14.81	cum	121.00	1791.60
11	8.1	Finishing wood work in frames of doors, windows, chimney windows, and other frames straight turned and fixed in position								
	2	for, square, bannock, chair, knob								
			3	5.16	0.13	0.07	5.14			
			1	4.95	0.13	0.07	0.06			
							5.18	cum	61061.00	11250.17
12	8.12	Finishing and lining flush door shutters, conforming to IS : 2002 (Part-1), decorative type core of block board construction with frame of first class field wood and well matched teak ply veneering with vertical grain in clear bands and face veneers on both faces of shutters excluding hinges								
	3	40 mm thick (single leaf)								
			3	3.30		2.10	5.67			
			1	0.75		2.10	1.58			
							7.25	sqm	5407.00	17873.42
13	8.14	Finishing and lining flush door made of single set of outside veneer with M.S. grill of approved pattern made of M.S. flats or square or round bars clad of red color fire charring paint								
		grill of 25 Kg/sqm W	3	1.20	1.20	25.00	108.00			
			1	0.90	0.60	25.00	13.50			
							121.50	kg	75.50	9659.25

SH	REF	DESCRIPTION	NO	L	W	HD	QTY	UNIT	RATE	AMOUNT
14	11.1	Providing and making 10mm thick cement plaster on one								
	2	in Cement Mortar 1:4 (1 cement : 4 fine sand)								
		room	1	3.30	2.10		6.93			
		bed room	1	2.30	3.60		11.88			
		kitchen	1	2.20	1.80		3.96			
		bath	1	0.90	1.80		1.62			
							24.39	sqm	87.50	2131.80
15	11.2	Providing and making 10mm thick cement plaster on two								
	4	in Cement Mortar 1:5 (1 cement : 4 fine sand)								
		room	2	3.30	2.10		13.86			
			2	2.80	2.00		11.20			
		bed room	2	3.30	3.60		23.76			
			2	1.80	3.00		10.80			
		kitchen	2	2.20	2.00		8.80			
			2	1.80	3.00		10.80			
		bath	2	0.90	2.00		3.60			
			2	1.80	2.00		7.20			
		bedroom	2	2.90	2.10		12.18			
		on	1	0.75	2.10		1.58			
		WC	2	1.20	1.21		4.36			
		VT	1	0.75	0.80		0.60			
							104.35	sqm	84.50	8817.85
16	11.3	Providing and making 10mm thick cement plaster on the rough side of single or half brick wall of room								
	4	in Cement Mortar 1:5 (1 cement : 4 fine sand)								
			2	0.00	3.00		48.00			
			2	3.30	3.00		19.80			
							67.80	sqm	127.50	7294.50
17	12.12	Providing and laying vitrified floor tiles with white tile putting, of size 300x300mm with water absorption less than 0.5% and resistance to 10 - 10000 of approved stone, laid on 20mm thick cement mortar 1:4 (1 cement : 4 coarse sand) including grouting the joints with white cement and mastic compound etc. complete.								
			sqm	363.00						
		room	1	3.30	2.10		6.93			
		bed room	1	3.30	3.60		11.88			
		kitchen	1	2.20	1.80		3.96			
		bath	1	0.90	1.80		1.62			
							24.39	sqm	363.00	23497.57
18	14.9	Chalking with acrylic isolation compound to give an even shade.								
	14.9.1	On new work (Two or more coats)								
		5 mm plaster	1	24.39			24.39			
		12 mm plaster	1	104.35			104.35			
							128.74	sqm	38.00	4892.52
19	14.14	Feathering walls with water proofing cement paint of required shade to give an even shade.								
	14.14.1	On new work (Two or more coats applied @ 3.04 kg/10 sqm)								
		15 mm plaster	1	87.80			87.80	sqm	41.00	3779.80
20	14.22	Painting on new work (two or more coats) to give an even shade with								
	14.22.1	Water synthetic enamel paint	m	8	1.20	1.20	8.64			

DETAILED ESTIMATE FOR 50 BED ASHRAM BHAVAN FOR TRIBAL DEVELOPMENT DEPARTMENT

As per PWD Building SOR - 01.01.2015

BOUNDARY WALL

SN	REF	DESCRIPTION	NO	L	W	HD	QTY	UNIT	RATE	AMOUNT
1	1.4	Clearing jungle including uprooting of trees, vegetation, grass, brush wood, trees and uproots of girth upto 30 cm measured at a height of 1 m above ground level and removal of material upto a distance of 50 m outside the periphery of the work deemed.								
			1	15.28	1.20		18.30	sqm	3.70	67.71
2	1.1	Excavation for all types and sizes in foundations, trenches and drains or for any other purpose including disposal of excavated stuff upto 1.5 m in 10 and less upto 5m or less for loading of pits.								
	1	In all types of work								
		COLUMN	4	1.50	1.50	1.50	12.00			
		DOUBLE COLUMN EXPANSION	1	2.00	1.50	1.50	4.50			
		SOLING	1	8.95	0.30	0.20	0.54			
							18.54	cum	168.00	3129.35
3	1.18	Providing and filling in place with sand, Clinker dust and fine medium grade floor in layers not exceeding 30cm in depth consolidating each deposited layer by ramming and watering, including dressing etc. complete								
		COLUMN	4	1.50	1.50	1.50	0.18			
		DOUBLE COLUMN EXPANSION	1	2.00	1.50	1.50	0.10			
							0.20	cum	371.00	74.20
4	3.1	Providing and laying nominal one plain cement concrete with crushed stone aggregate using concrete mixer in all works upto plinth level excluding cost of form work								
	3	1:2:8 (1 cement : 3 coarse sand : 8 graded stone aggregate above nominal size)								
		COLUMN	4	1.50	1.50	0.10	0.90			
		DOUBLE COLUMN EXPANSION	1	2.00	1.50	0.10	0.90			
		SOLING	1	8.90	0.30	0.10	0.27			
							1.47	cum	2875.00	4381.45
5	3.3	Providing and laying design one reinforced cement concrete with crushed graded stone aggregate 20mm nominal size using batching plant, transit mixer and concrete pump, in all works upto plinth level excluding cost of form work								
	†	M:20 Grade								
		COLUMN	4	1.40	1.40	0.20	1.57			
		DOUBLE COLUMN EXPANSION	1	1.80	1.40	0.20	0.88			
		COLUMN BELOW PLINTH BEAM	8	0.20	0.30	0.80	0.25			
							4			
		PLINTH BEAM	1	18.28	0.20	0.30	0.93			
		COLUMN ABOVE PLINTH BEAM	4	0.20	0.30	2.10	0.75			
							8			
							4.03	cum	4331.00	17655.18
6	3.12	Providing and placing in position reinforcement for R.C.C. work excluding strengthening, cutting, bending, tying etc. complete as per drawings including cost of binding wire in transverse and plinth all complete								
	1	Reinns Electrically tension bars F.E 415	4.09	90.00			362.79	kg	54.00	19773.06



SN	REF	DESCRIPTION	NO	L	W	HD	QTY	UNIT	RATE	AMOUNT
7	2.1	Providing and laying form work including cutting, strutting, bracing, bolting, bases of columns (with beam, corner and at the above and side and all type of wall below plinth level)								
		COLUMN	18	1.40		0.30	1.48			
		DOUBLE COLUMN (EXPANSION)	3	1.80		0.30	0.72			
		COLUMN	3		1.40	0.30	1.00			
		COLUMN BELOW PLINTH BEAM	6		1.40	0.60	1.72			
			2	10.25	0.30		1.18			
							21.82	sqm	138.00	3006.37
8		Concrete, Pillars, Piers and stem- rectangular or square in shape								
		COLUMN ABOVE PLINTH	6	1.00		2.10	12.60			
		COPIES	2	15.25		0.05	1.93			
							14.53	sqm	297.00	4195.15
9	3.1	Providing and laying horizontal and vertical cement concrete with crushed stone aggregate using concrete mixer in all works upto plinth level excluding cost of form work								
		1:1½:3 (1 cement : 1½ coarse sand : 3 graded stone aggregate 30mm nominal size)								
		COPIES	1	15.25	0.30	0.05	0.22	cum	4971.00	931.75
9	7.5	Brick work with plaster 12mm and 20mm (F.F.D. brick) conforming to IS 12004-2002 of class designation 4.0 in condition and plinth in								
		Cement Mortar 1:6 (1 cement : 6 coarse sand)								
		FOUNDATION	1	15.25	0.30	0.10	0.31			
		DEDUCTION	6		0.20	0.30	0.18			
							0.28	cum	3263.00	918.89
		SUPERSTRUCTURE	1	15.25	0.30	1.60	4.58			
		DEDUCTION	6		0.20	0.30	1.10			
							4.22	cum	3564.00	14293.36
10	1.17	Filling from available excavated soil (Excluding rocky in trenches, plinth, sides of foundation etc. in layers not exceeding 20cm in depth consolidating each deposited layer by tamping and watering with a load upto 50 M. and 10 upto 1.5 M)								
		Column	4	1.50	1.50	1.50	13.50			
		double column	1	2.10	1.50	1.50	4.73			
		COPIES								
		core filling	4	1.20	1.20	0.10	-0.68			
		double column	1	1.50	1.20	0.10	-0.18			
		square hole	4	1.20	1.20	0.10	-0.54			
		double column	1	1.50	1.20	0.10	-0.18			
							16.71	cum	65.00	1096.35
11	11.2	Providing and laying 12mm thick cement plaster of mix								
	11.2.4	In Cement Mortar 1:6 (1 cement : 6 fine sand)	1	15.25		1.50	28.98			
			1	15.25		0.30	4.59			
		columns	6	0.80		0.60	3.88			
							38.45	sqm	91.50	3513.21
12	11.3	Providing and laying 15mm thick cement plaster on the rough side of single or half brick wall of mix								
	11.3.4	In Cement Mortar 1:6 (1 cement : 6 fine sand)	1	15.25		1.50	28.98			
		columns	6	0.20		0.40	0.72			
							29.70	sqm	107.00	3177.37

SN	NO	DESCRIPTION	NO	L	M	NO	QTY	UNIT	RATE	AMOUNT
12	8.3	Steel work in tubular frame, columns of rectangular tubular tube etc.) structure as built-up sections, bracing and frame work including cutting, fitting, bolting in position upto a height of 5m above plinth level, consisting of column bracing, roof bracing (if required), bats, rials and members for bracing etc. complete with applying a priming coat of red oxide zinc chromate primer.								
	2	Electric resistance or induction built welded tubes Grade 305								
		square bar (5 x 25) wt. 2.01 kg/m	125	0.50		2.01	125.03			
		square bar (5 x 31) wt. 1.00 kg/m	15	2.50		1.00	42.00			
		square bar (5 x 75) wt. 1.00 kg/m	10	0.50		1.00	3.00			
							172.03	kg	33.50	16140.44
14	14.14	Painting walls with water proofing cement paste of required shade to give an even shade.								
	14.14.1	On new work (Two or more coats applied @ 3.54 kg/10 sqm)								
		Qty of Cement plaster	1	36.43		36.43				
		Qty of Cement plaster	1	25.70		25.70				
							66.13	sqm	41.00	2711.33
15	14.5	White washing with lime to give an even shade.								
	14.5.1	On new work (Three or more coats)								
		Qty of Cement plaster	1	36.43		36.43				
		Qty of Cement plaster	1	25.70		25.70				
							66.13	sqm	9.40	621.52
16	14.15	Painting exterior surface with ACRYLIC EMULSION white wash of required shade as per manufacturer's specifications to give protective and decorative finish including cleaning washing of surface etc. complete with								
	14.15.1	On new work (Two or more coats applied @ 1.43 kg/10 sqm over and including priming coat of white primer applied @ 2.20 kg/10 sqm)								
		grit painting	5	2.40	0.50	7.00	sqm	56.00		392.00
		As per SOR Total Amount						Rs:		95535.97
		Cost of 15.25 M long B Wall						Rs:		95535.97
		Cost per meter						Rs:		6264.05
		Total cost of 180 m length						Rs:		1127637.62
		loop Gate						Rs:		35000.00
		GRAND TOTAL						Rs:		1162637.62
		SAY						Rs.		1163000.00

Assistant Engineer
Tribal Development
Raigarh (C.S.)

DETAILED ESTIMATE FOR 50 BED ASHRAM BHAVAN

FOR TRIBAL DEVELOPMENT DEPARTMENT
AS PER PWD BUILDING SOR, W.A.F. 01.01.2015

DRAIN

NO.	REV	DESCRIPTION	NO	L	M	HO	QTY	UNIT	RATE	AMOUNT
ESTIMATE FOR STANDARD LENGTH OF 10 M										
1	1.1	Excavation for all forms and sides of foundations, trenches and drains as per any other purpose including disposal of excavated material upto 1.5 m lift and haul upto 50m (at least 5m away from the trench) including dressing and leveling of job.								
1										
2	1.26	Cartage by mechanical transport upto 5 km load	1	10.00	0.80	0.60	4.80	cum	155.35	688.00
2	1.25.1	Earth								
3	2.1	Providing and laying nominal max. plain cement concrete with crushed stone aggregate using concrete mixer in all works upto plinth level including cost of form work.					4.80	cum	111.50	532.80
3		1:4:8 (1 cement : 4 coarse sand : 8 graded stone aggregate)								
4	1.2	Providing and laying nominal max. reinforced cement concrete with crushed stone aggregate using concrete mixer in all works upto plinth level including cost of form work.	1	10.00	0.30	0.10	0.80	cum	2558.00	2127.30
4		1:1½:3 (1 cement : 1½ coarse sand : 3 graded stone aggregate)								
		Over base								
		1st lift	1	10.00	0.30	0.10	0.50			
		2nd lift	2	10.00	0.10	0.40	0.50			
		3rd lift	1	10.00	0.30	0.10	0.50			
							1.00	cum	4143.00	2900.70
5	1.17	Filling from available excavated soil (excluding rock) in trenches, paths, sides of foundations etc. in layers not exceeding 20cm in depth consolidating each deposited layer by tamping and watering with a load upto 10 M and lift upto 1.5 M.	2.00	10.00	0.10	0.50	1.85	cum	65.00	107.35
6	2.12	Providing and placing in position reinforcement for R.C.C. work including crimping, cutting, bending, tying etc. complete as per drawings including cost of binding wire in foundation and slabs all complete.								
1		Thermo-Mechanically treated bars (T.E. 410)								
		wt of steel @ 50 kg/cum	50	1.00			35.00	kg	54.50	5177.50
7	2.1	Providing and tying base work including cutting, chiseling, slitting, slaying, propping bracing etc. complete and including its removal at all levels, for:								
1		Foundations, footings, bases of columns plinth beam, curtain wall in any shape and size and all type of wall below plinth level.								
		Wall outer side	2	10.00		0.40	9.00			
		Wall inner side	2	10.00		0.50	11.00			
		Door	1	10.00	0.30		3.00			
		Base plate	2	10.00		0.10	2.00			
							25.00	sqm	138.00	3475.80
As per SOR Total Amount										Rs. 29217.45
Cost of 10 M long Drain										Rs. 29217.45
Cost per meter										2921.75
Total cost of 80 m length										161739.60
Assistant Engineer										
Tribal Group										
Rangpur (G.O.)										
SAY										Rs. 162000.00

DETAILED ESTIMATE FOR 50 BED ASHRAM BHAVAN

FOR TRIBAL DEVELOPMENT DEPARTMENT

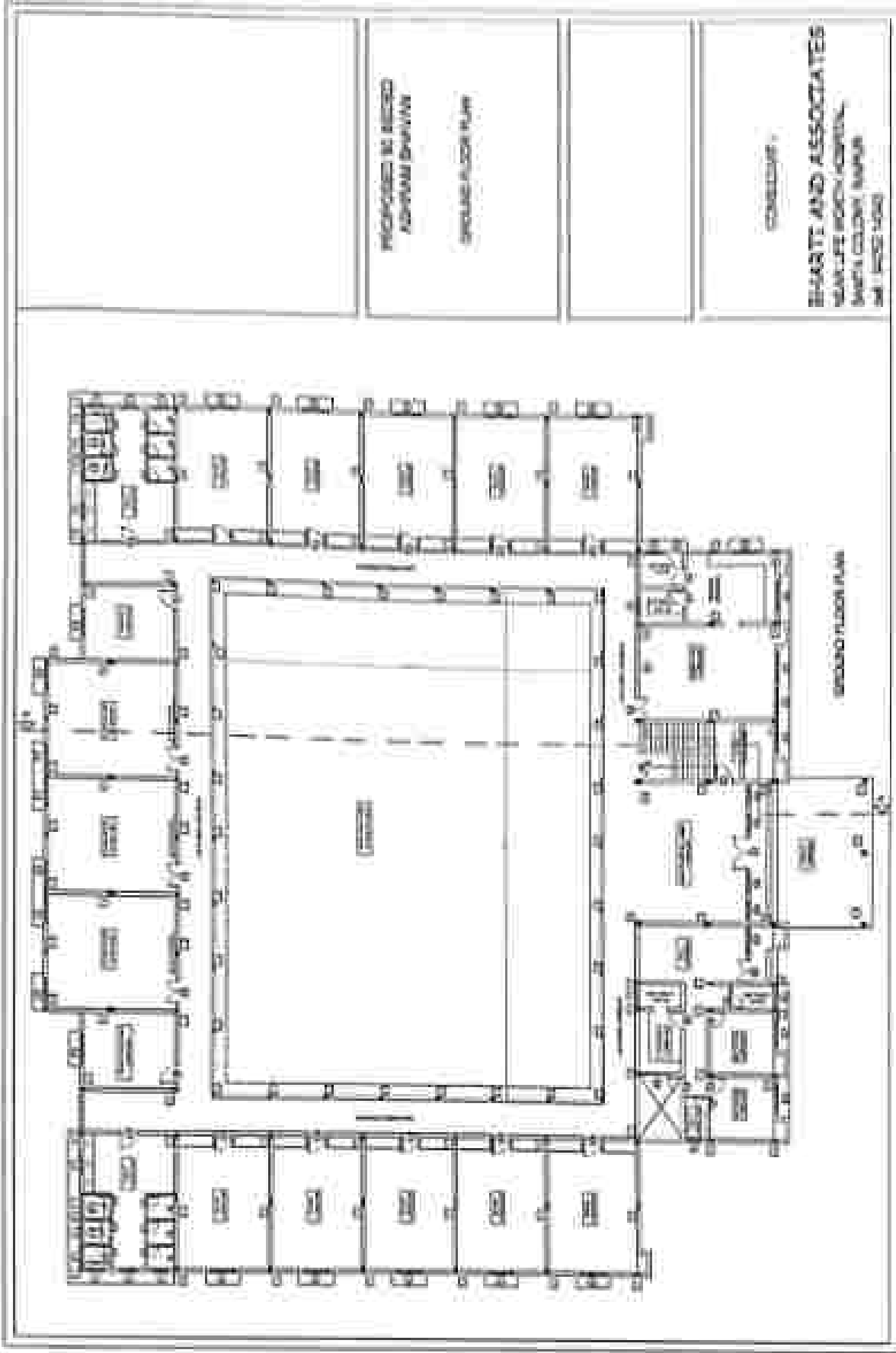
As per PWD Building BOR - 01.01.2015, and Road BOR - 01.01.2015

PAVED ENTRANCE

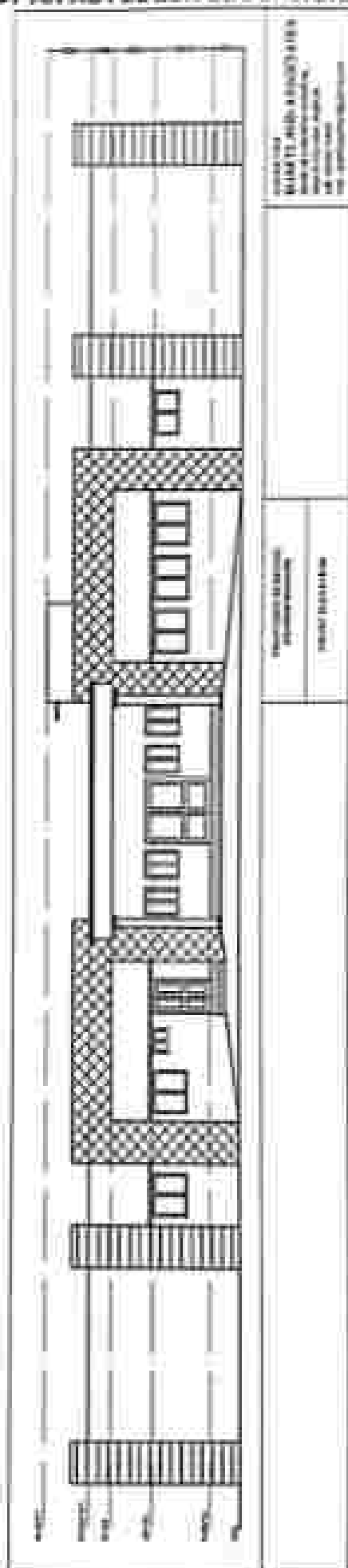
SN	REF	DESCRIPTION	NO	L	W	HD	QTY	UNIT	RATE	AMOUNT
ESTIMATE FOR STANDARD LENGTH OF 10 M										
A :- Items as per Building BOR										
1	1.1	Excavation for all types and sizes of foundations, trenches and drains or for any other purpose including disposal of excavated soil upto 1.5 m lift and level upto 15m (at least 5m away from the excavated area), including dewatering and leveling of pits.								
	1	in all types of soils								
		Side walls								
		Pathway	2	10.00	0.50	0.45	8.00			
			1	10.00	4.50	0.15	8.50			
							12.00	cum	185.00	2188.50
2	1.17	Filling from available excavated soil (including rock) in trenches, pits, sides of foundation etc. in layers not exceeding 25mm in depth consolidating each deposited layer by tamping and watering with a load upto 50 M, and lift upto 1.5 M.	2	10.00	0.15	0.45	1.35	cum	65.00	87.75
4	2.1	Providing and laying nominal 150 mm cement concrete with crushed stone aggregate using concrete mixer in all works upto plate level excluding cost of form work.								
	2	1:4:8 (1 cement : 4 coarse sand : 8 graded stone aggregate 45mm nominal size)	2	10.00	0.50	0.15	1.00	cum	2659.00	2659.00
	5	1:1.5:3 (1 cement : 1.5 coarse sand : 3 graded stone aggregate 25mm nominal size)								
		For coping on walls	2	10.00	0.20	0.05	0.20	cum	4873.00	974.60
5	7.5	Brick work with modular 1/2 inch lime bricks (FACED BRICKS) conforming to IS:12554-2003 of class designation 4.0 in standard and placed in:								
	4	Concert Mortar 1:6 (1 cement : 6 coarse sand)	2	10.00	0.20	1.00	4.00	sqm	2253.00	13812.00
6	11.2	Providing and making 12mm thick cement plaster of mix:								
	11.2.4	In Cement Mortar 1:5 (1 cement : 5 fine sand)	2	10.00		0.50	11.00	sqm	91.50	1006.50
7	11.3	Providing and making 15mm thick cement plaster on the rough side of single or half brick wall of mix:								
	11.3.4	In Cement Mortar 1:6 (1 cement : 6 fine sand)	2	10.00		0.50	10.00	sqm	167.50	1675.00
8	14.15	Painting exterior surface with ACRYLIC SMOOTH emulsion coat of required shade as per manufacturer's specifications to give protective and decorative finish including cleaning, wetting of surface etc. complete with.								
	14.15.1	On new work (Two or more coats applied @ 1.43 lit / sqm over and including priming coat of exterior primer applied @ 0.20 lit / sqm)	2	10.00		1.00	20.00	sqm	56.00	1120.00
		External side								
9	12.45	Providing & laying 60mm thick precast interlocking concrete blocks of approved size (approx 300 sqm) and shape pattern, over 10 mm thick average compact coarse sand bed with joints of 3mm thick filled by fine sand including leveling with surface vibrator, tamping and sweeping etc. complete of minimum compressive strength of 250 kg/cm ²								
	12.45.1	Precast normal coloured precast interlocking concrete block	1	10.00	4.00		40.00	sqm	436.00	20056.00

SN	REF	DESCRIPTION	QD	L	W	Hd	Qty	UNIT	RATE	AMOUNT
B :- Items as per Road SOR			A * Total as per Building SOR						Rs.	43581.85
12	1.1	Construction of embankment with Minimum Gravel Part Borrow Pit/Source Area (Construction of embankment with specified otherwise in the contract) obtained from borrow pits with all its and costs, transporting to site, spreading, grading (300-2)								
		1000mm wide x 500mm high, Average height = 10 x 0.50 = 0.25								
1	4.1	Gravel Sub-base as per Table- 40(L)	2	10.00	2.00	0.50	20.00	Cum.	223.00	4460.00
		Construction of gravel sub-base by spreading graded material, carriage of gravel material to work site, spreading in uniform layers with motor grader or prepared surface rollers, rolling and compacting with vibratory power roller at OWD to achieve the desired density, complete as per clause 401								
	B	By Mix in place method								
		Disintegrated rock 1x maximum having CBR value not less than 20 and F ₁ and L.L. not more than 8 and 20 respectively. (For Village road only)	1	10.00	4.00	0.00	27.00	Cum.	450.00	12150.00
B * Total as per Road SOR			Sub-Total (A + B)						Rs.	17150.00

PRODUCED BY AN AUTODESK EDUCATIONAL PRODUCT

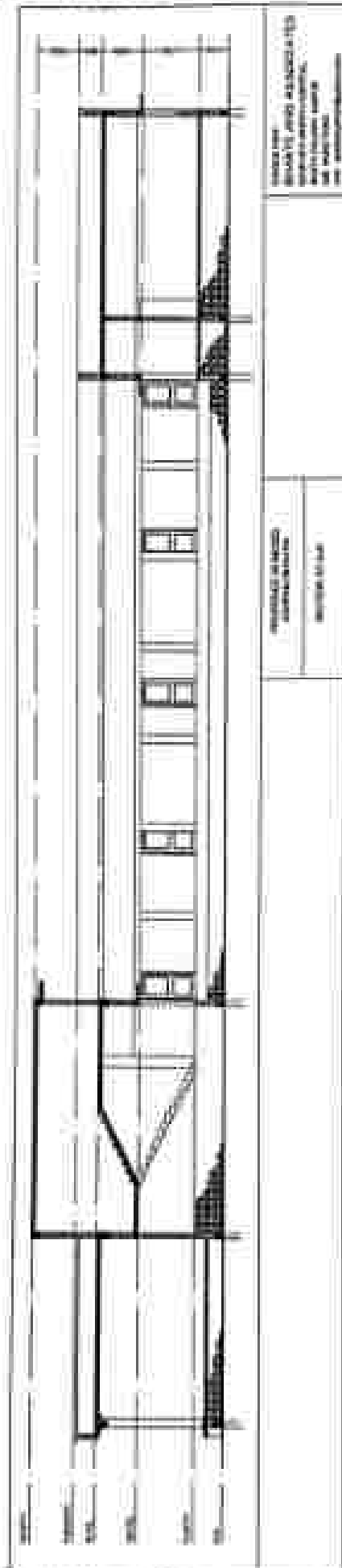


PRODUCED BY AN AUTODESK EDUCATIONAL PRODUCT



PRODUCED BY AN AUTODESK EDUCATIONAL PRODUCT

PRODUCED BY AN AUTODESK EDUCATIONAL PRODUCT



SECTION
ELEVATION
AND ASSOCIATED
DETAILS
AND
SECTION
ELEVATION
AND ASSOCIATED
DETAILS

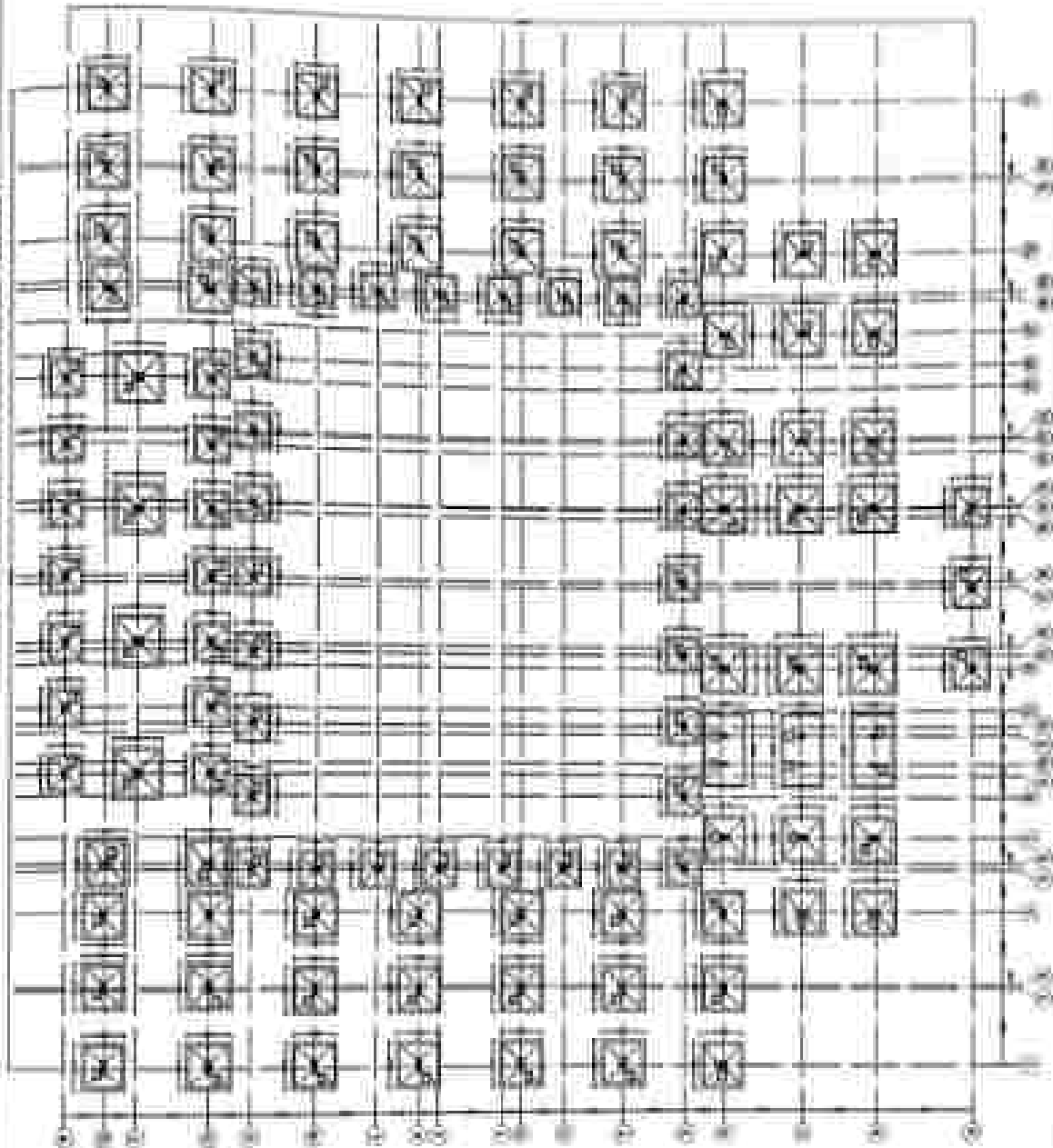
SECTION
ELEVATION
AND ASSOCIATED
DETAILS

PRODUCED BY AN AUTODESK EDUCATIONAL PRODUCT

PRODUCED BY AN AUTODESK EDUCATIONAL PRODUCT

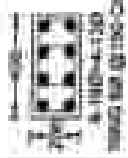
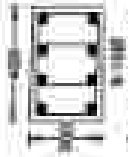

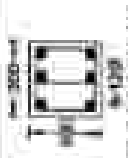
PRODUCED BY AN AUTODESK EDUCATIONAL PRODUCT

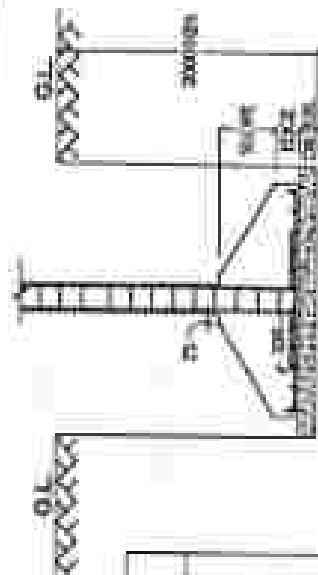
PRODUCED BY AN AUTODESK EDUCATIONAL PRODUCT



PRODUCED BY AN AUTODESK EDUCATIONAL PRODUCT

COLUMN SCHEDULE

C1	C2	C3	C4
 4-18Ø16 100x100 mm Ø16Ø16 C/C	 4-18Ø16 100x100 mm Ø16Ø16 C/C	 4-12Ø10 100x100 mm Ø10Ø10 C/C	 4-12Ø10 100x100 mm Ø10Ø10 C/C



TYPICAL FOOTING SECTION

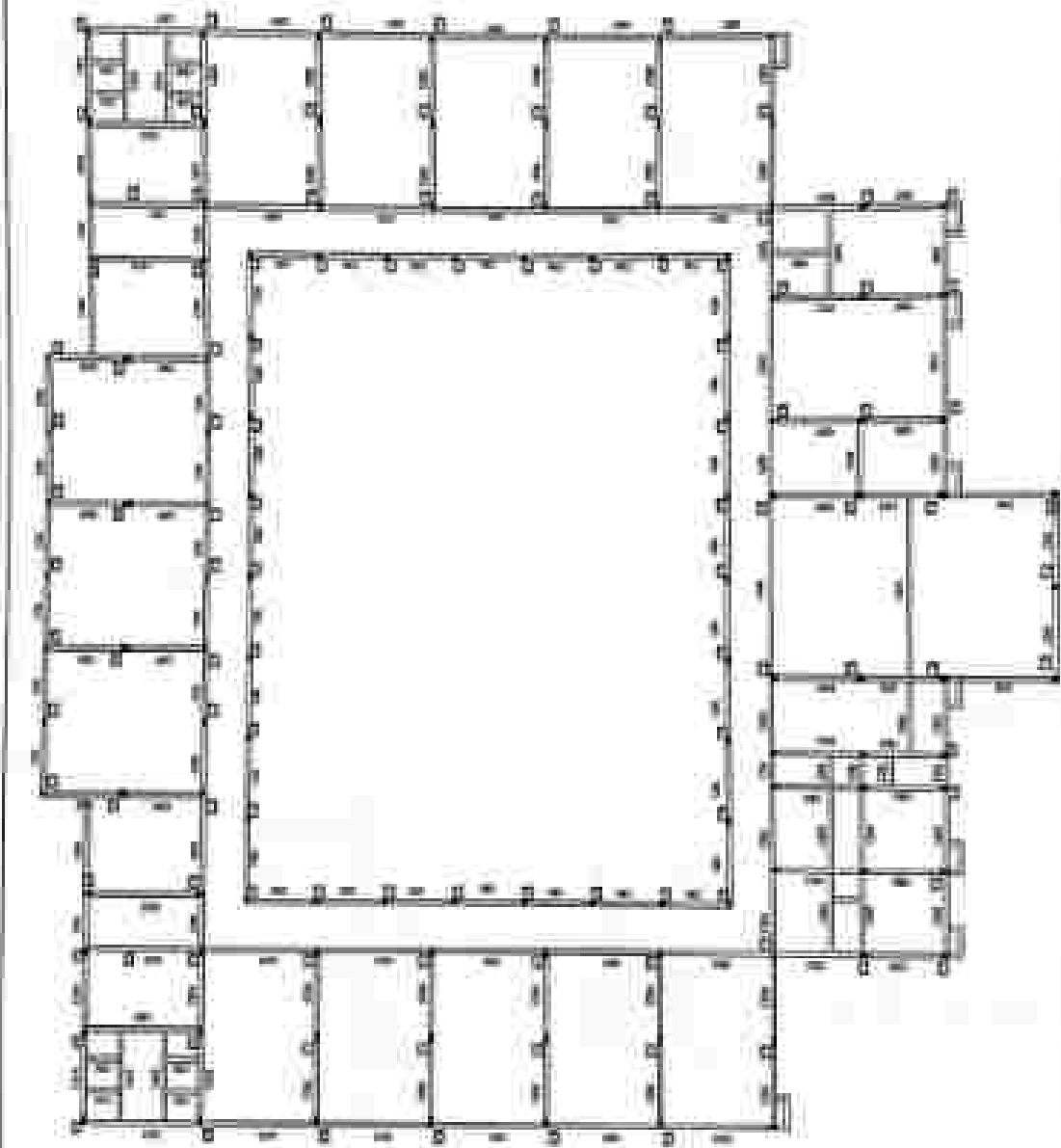
FOOTING SCHEDULE

FOOTING	EXCA. SIZE	FOOTING SIZE	EDGE	DEPTH	REINFORCEMENT	REMARK
F1	2200x2200	1800x1800	200	400	10Ø16 150 C/C BOTHWAYS	C1
F2	2400x2400	2100x2100	200	400	10Ø16 150 C/C BOTHWAYS	C2
F3	1800x1800	1500x1500	200	300	10Ø16 150 C/C BOTHWAYS	C3
F4	2000x2000	1700x1700	200	300	10Ø16 150 C/C BOTHWAYS	C4

PROPOSED 50 BEDED-
ASHRAM BHAVAN

COLUMN AND FOOTING SCHEDULE

PRODUCED BY AN AUTODESK EDUCATIONAL PRODUCT



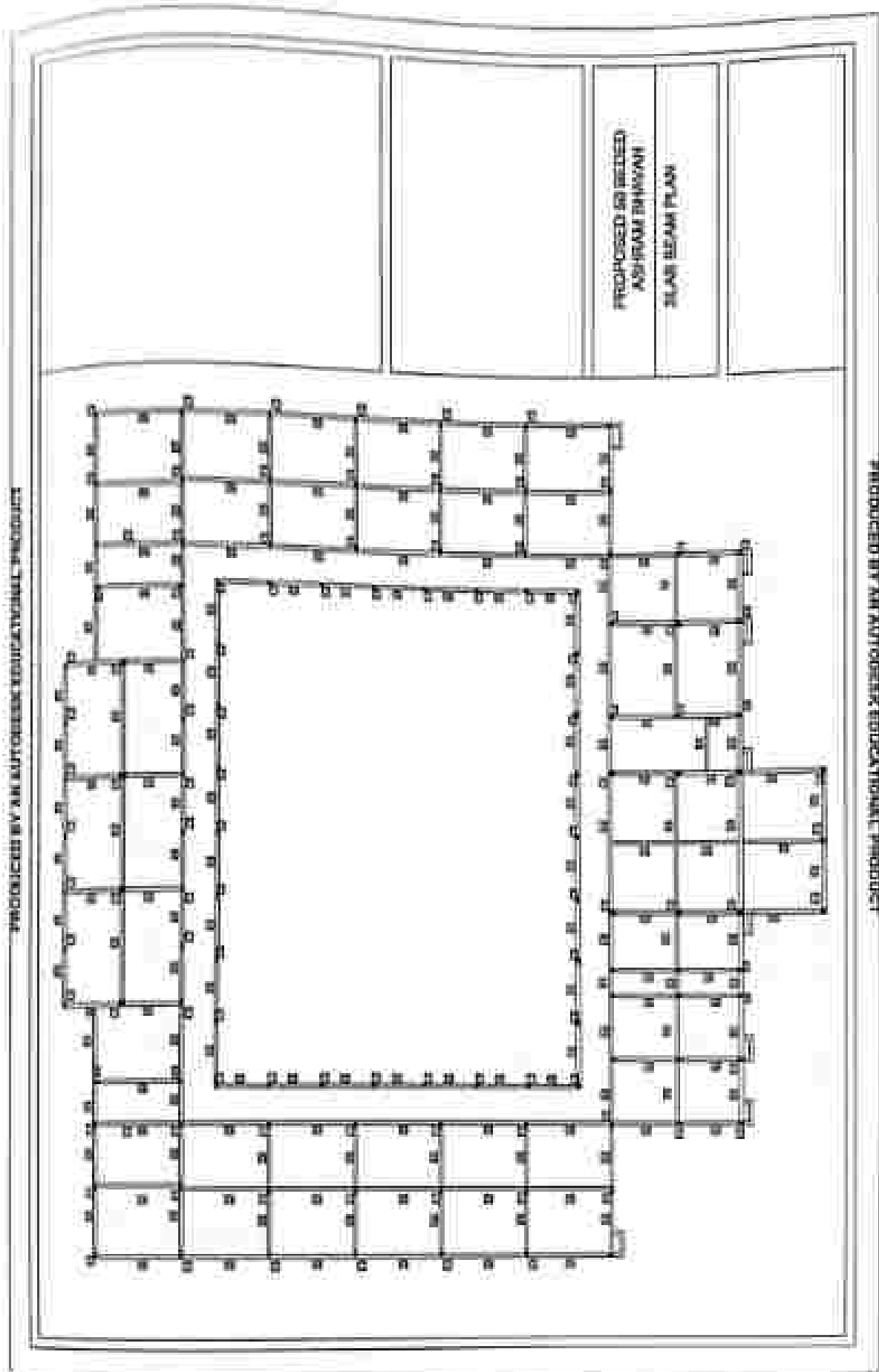
PRODUCED BY AN AUTODESK EDUCATIONAL PRODUCT

PROPOSED IN BEDED
ASHRAM BHAVAN
GROUND BEAM PLAN

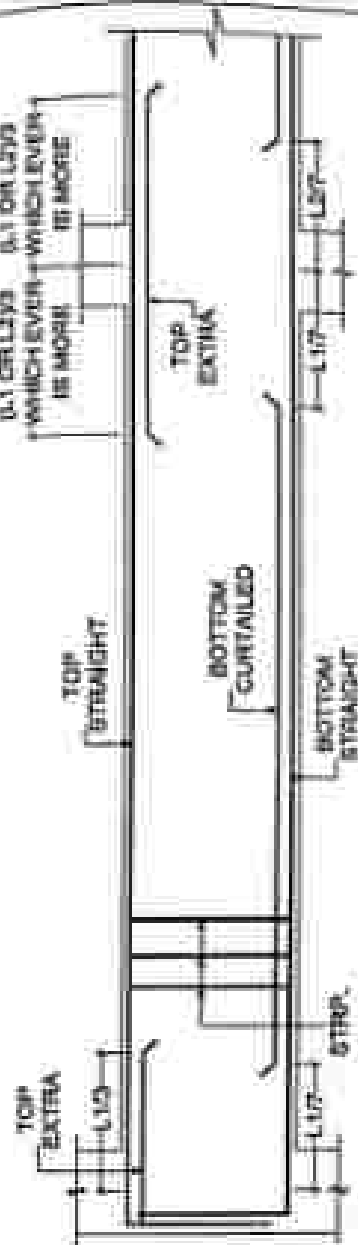
PRODUCED BY AN AUTODESK EDUCATIONAL PRODUCT



BEAM	SIZE	BOTTOM REIN.		TOP REIN.		STIRRUP
		STRAIGHT + CURTAIL	2-12#	STRAIGHT	EXTRA	
GB1	200x300		2-12#	2-12#	—	6# @ 150 C/C
GB2	200x400		2-12#	2-12#	2-12#	6# @ 150 C/C
			2-16#			
GB3	200x450		2-12#	2-12#	2-16#	6# @ 150 C/C
			2-16#			
GB4	200x500		3-16#	2-12#	2-16#	6# @ 150 C/C
			2-16#			
GB5	200x550		3-12#	2-12#	2-16#	6# @ 150 C/C
			2-16#			



PRODUCED BY AN AUTODESK EDUCATIONAL PRODUCT



TYP. BEAM SECTION DETAIL

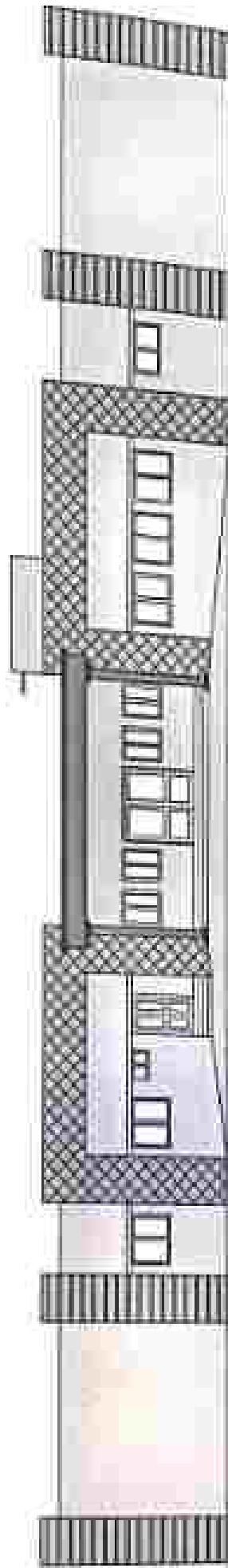
SLAB BEAM DETAIL

BEAM	SIZE	BOTTOM REIN. STRAIGHT + CURTAIL	TOP REIN.		STIRRUP
			STRAIGHT	EXTRA	
B1	200x400	2-120 2-120	2-120	3-120	60 @ 150 C/C
B2	200x450	2-120 3-160	2-120	3-160	60 @ 130 C/C
B3	200x500	3-160 3-160	2-160	3-160	80 @ 100 C/C
B4	200x600	3-160 4-180	2-160	4-180	80 @ 150 C/C
B5	200x300	3-120	3-120	—	60 @ 150 C/C

DETAILS OF SLAB

SLAB	MAIN SPAN	OTHER SPAN	SLAB THICKNESS
S1	80 @ 125 C/C	80 @ 125 C/C	125 MM
S2	100 @ 125 C/C	100 @ 125 C/C	150 MM

PRODUCED BY AN AUTODESK EDUCATIONAL PRODUCT



PROPOSED ASHRAM BHAVAN
FOR DEPTT. OF TRIBAL DEVELOPMENT, RAIPUR, C. G.